

Recombinant Human HIRA protein, His-tagged

Cat. No. HIRA-4353H **Lot. No.** (See product label)

SPECIFICATION

Product Overview	Recombinant Human HIRA protein(850-1017 aa), fused with N-terminal His tag, was expressed in E.coli.
Species	Human
Source	E.coli
ProteinLength	850-1017 aa
Form	The purified protein was lyophilized from sterile phosphate-buffered saline (PBS: 58 mM Na ₂ HPO ₄ , 17 mM NaH ₂ PO ₄ , 68 mM NaCl, pH 7.4). Prior to lyophilization, 5% (w/v) trehalose and 5% (w/v) mannitol were incorporated as cryoprotective excipients. The protein was eluted with a buffer containing 300 mM imidazole.
AASequence	SLSTWNLVSDKQDSLQCADFRSSLPSQDAMLCGPLAIIQGRTSNSGRQAARLFS VPHVVQQUETTLAYLENQVAAALTLQSSHEYRHWLLVYARYLVNEGFEYRLREICKDL LGPVHYSTGSQWESTVVGLRKRELLKELLPVIGQNLRQRLFTQCQEQLDILRDK
Purity	85%, by SDS-PAGE with Coomassie Brilliant Blue staining.
Storage	Store at 2-8°C for 1-2 weeks. Aliquot and store at -20°C to -80°C for up to 3 months, reconstitution with sterile water and addition of an equal volume of glycerol. Avoid repeat freeze-thaw cycles.
Reconstitution	Dissolve the product in 200 µl sterile water to achieve a working concentration of 0.25

 Tel: 1-631-559-9269 1-516-512-3133

 Email: info@creative-biomart.com  Fax: 1-631-938-8127

 45-1 Ramsey Road, Shirley, NY 11967, USA

g/μl. If experimental compatibility allows, mix the aqueous solution with an equal volume of glycerol (1:1 ratio) after initial reconstitution.

GENE INFORMATION

Gene Name	HIRA HIR histone cell cycle regulation defective homolog A (<i>S. cerevisiae</i>) [<i>Homo sapiens</i>]
Official Symbol	HIRA
Synonyms	HIRA; HIR histone cell cycle regulation defective homolog A (<i>S. cerevisiae</i>); HIR (histone cell cycle regulation defective) homolog A (<i>S. cerevisiae</i>) , TUPLE1; protein HIRA; DGCR1; DiGeorge critical region gene 1; TUP1; TUP1-like enhancer of split protein 1; TUPLE1;
Gene ID	7290
mRNA Refseq	NM_003325
Protein Refseq	NP_003316
MIM	600237
UniProt ID	P54198

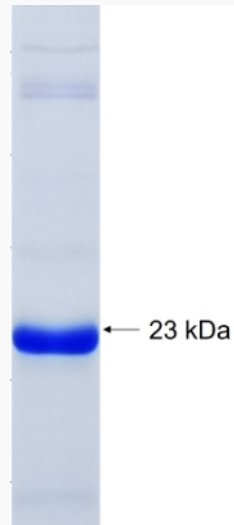
 Tel: 1-631-559-9269 1-516-512-3133

 Email: info@creative-biomart.com  Fax: 1-631-938-8127

 45-1 Ramsey Road, Shirley, NY 11967, USA



SDS-PAGE



☎ Tel: 1-631-559-9269 1-516-512-3133

☎ Email: info@creative-biomart.com ☎ Fax: 1-631-938-8127

☎ 45-1 Ramsey Road, Shirley, NY 11967, USA