

Recombinant Human HIRA protein, GST-tagged

Cat. No. HIRA-4354H **Lot. No.** (See product label)

SPECIFICATION

Product Overview	Recombinant Human HIRA protein(850-1017 aa), fused with N-terminal GST tag, was expressed in E.coli.
Species	Human
Source	E.coli
ProteinLength	850-1017 aa
Form	The purified protein was lyophilized from sterile phosphate-buffered saline (PBS: 58 mM Na ₂ HPO ₄ , 17 mM NaH ₂ PO ₄ , 68 mM NaCl, pH 8.0). Prior to lyophilization, 5% (w/v) trehalose and 5% (w/v) mannitol were incorporated as cryoprotective excipients. The protein was eluted with a buffer containing 100 mM reduced glutathione (GSH).
AASequence	SLSTWNLVSDKQDSLACADFRSSLPSQDAMLCGPLAIIQGRTSNSGRQAARLFS VPHVVQQUETTLAYLENQVAAALTLQSSHEYRHWLLVYARYLVNEGFEYRLREICKDL LGPVHYSTGSQWESTVVGLRKRELLKELLPVIGQNLRFQRLFTECQEQLDILRDK
Purity	85%, by SDS-PAGE with Coomassie Brilliant Blue staining.
Storage	Store at 2-8°C for 1-2 weeks. Aliquot and store at -20°C to -80°C for up to 3 months, reconstitution with sterile water and addition of an equal volume of glycerol. Avoid repeat freeze-thaw cycles.

 Tel: 1-631-559-9269 1-516-512-3133

 Email: info@creative-biomart.com  Fax: 1-631-938-8127

 45-1 Ramsey Road, Shirley, NY 11967, USA

Reconstitution

Dissolve the product in 200 µl sterile water to achieve a working concentration of 0.25 g/µl. If experimental compatibility allows, mix the aqueous solution with an equal volume of glycerol (1:1 ratio) after initial reconstitution.

GENE INFORMATION
Gene Name

HIRA HIR histone cell cycle regulation defective homolog A (*S. cerevisiae*) [*Homo sapiens*]

Official Symbol

HIRA

Synonyms

HIRA; HIR histone cell cycle regulation defective homolog A (*S. cerevisiae*); HIR (histone cell cycle regulation defective) homolog A (*S. cerevisiae*) , TUPLE1; protein HIRA; DGCR1; DiGeorge critical region gene 1; TUP1; TUP1-like enhancer of split protein 1; TUPLE1;

Gene ID

7290

mRNA Refseq

NM_003325

Protein Refseq

NP_003316

MIM

600237

UniProt ID

P54198

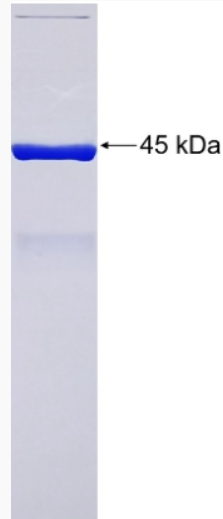
 Tel: 1-631-559-9269 1-516-512-3133

 Email: info@creative-biomart.com  Fax: 1-631-938-8127

 45-1 Ramsey Road, Shirley, NY 11967, USA



SDS-PAGE



Tel: 1-631-559-9269 1-516-512-3133

Email: info@creative-biomart.com Fax: 1-631-938-8127

45-1 Ramsey Road, Shirley, NY 11967, USA