

## Recombinant Human HIRA Protein, GST-tagged

Cat. No. HIRA-4770H Lot. No. (See product label)

### SPECIFICATION

<b>Product Overview</b>	Human HIRA full-length ORF ( NP_003316.3, 1 a.a. - 1017 a.a.) recombinant protein with GST-tag at N-terminal.
<b>Species</b>	Human
<b>Source</b>	Wheat Germ
<b>Description</b>	<p>This gene encodes a histone chaperone that preferentially places the variant histone H3.3 in nucleosomes. Orthologs of this gene in yeast, flies, and plants are necessary for the formation of transcriptionally silent heterochromatin. This gene plays an important role in the formation of the senescence-associated heterochromatin foci. These foci likely mediate the irreversible cell cycle changes that occur in senescent cells. It is considered the primary candidate gene in some haploinsufficiency syndromes such as DiGeorge syndrome, and insufficient production of the gene may disrupt normal embryonic development. [provided by RefSeq]</p>
<b>Molecular Mass</b>	138.2 kDa
<b>AA Sequence</b>	<p>MKLLKPTWVNHNHGKPIFSVDIHPDGTKFATGGQGQDSGKVVIWNMSPVLQEDDEK  DENIPKMLCQMDNHLACVNCVRWSNSGMYLASGGDDKLIMVWKRATYIGPSTVFG  SSGKLANVEQWRCVSILRNHSGDVMDVAWSPHDAWLASCSVDNTVVIWNAVKFPE  ILATLRGHSGLVKGLTWDPVGKYIASQADDRSLKVVWRTLDWQLETSITKPFDECGGT  THVLRLSWSPDGHYLVSAHAMNNSGPTAQIIEREGWKTNMDFVGHRAVTVVKFN  PKIFKKKQKNGSSAKPSCPYPCCCAVGSKDRSLSVWLTCLKRPLVVIHELFDKSIMDIS</p>

 Tel: 1-631-559-9269 1-516-512-3133

 Email: [info@creative-biomart.com](mailto:info@creative-biomart.com)  Fax: 1-631-938-8127

 45-1 Ramsey Road, Shirley, NY 11967, USA



WTLNGLGILVCSMDGSAFLDFSQDELGDPLSEEEKSRIHQSTYGKSLAIMTEAQLS  
TAVIENPEMLKYQRRQQQQQLDQKSAATREMGSAATSVAGVVNGESLEDIRKNLLKK  
QVETRTADGRRRITPLCIAQLDTGDFSTAFFNSIPLSGSLAGTMLSSHSSPQLPLDS  
STPNISFGASKPCTEPVVAASARPAGDSVNKDSMNATSTPAALSPSVLTTPSKIEPMK  
AFDSRFTERSKATPGAPALTSMTPTAVERLKEQNLVKELRPRDLLESSSDSDEKVPL  
AKASSLSKRKLELEVETVEKKKKGRPRKDSRLMPVLSVQSPAALTAEKEAMCLSAP  
ALALKLPIPSQRAFTLQVSSDPSMYIEVENEVTVVGGVKLSRLKCNREGKEWETVL  
TSRILTAAGSCDVVCVACEKRMLSVFSTCGRLLSPILLPSPISTLHCTGSYVMALTA  
AATLSVWDVHRQVVVVKEESLHSILAGSDMTVSQILLTQHGIPTVMNLSGKAYCFNP  
SLSTWNLVSDKQDSLACADFRSSLPSQDAMLCGPLAINIIGRTSNSGRQAARLFS  
VPHVVQETTAYLENQVAAALTLQSSHEYRHWLLVYARYLVNEGFEYRLREICKDL  
LGPVHYSTGSQWESTVVGLRKRELLKELLPVIGQNLRFQRLFTECQEQLDILRDK

**Applications**

Enzyme-linked Immunoabsorbent Assay  
Western Blot (Recombinant protein)  
Antibody Production  
Protein Array

**Notes**

Best use within three months from the date of receipt of this protein.

**Storage**

Store at -8 centigrade. Aliquot to avoid repeated freezing and thawing.

**Storage Buffer**

50 mM Tris-HCl, 10 mM reduced Glutathione, pH=8.0 in the elution buffer.

**GENE INFORMATION**

**Gene Name**

HIRA HIR histone cell cycle regulation defective homolog A (*S. cerevisiae*) [ *Homo sapiens* ]

**Official Symbol**

HIRA

Tel: 1-631-559-9269 1-516-512-3133

Email: [info@creative-biomart.com](mailto:info@creative-biomart.com) Fax: 1-631-938-8127

45-1 Ramsey Road, Shirley, NY 11967, USA

**Synonyms** HIRA; HIR histone cell cycle regulation defective homolog A (*S. cerevisiae*); HIR (histone cell cycle regulation defective) homolog A (*S. cerevisiae*) , TUPLE1; protein HIRA; DGCR1; DiGeorge critical region gene 1; TUP1; TUP1-like enhancer of split protein 1; TUPLE1;

**Gene ID** 7290

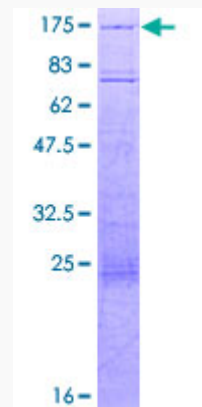
**mRNA Refseq** NM\_003325

**Protein Refseq** NP\_003316


**MIM** 600237

**UniProt ID** P54198

**Quality Control Testing**



12.5% SDS-PAGE Stained with Coomassie Blue.

 Tel: 1-631-559-9269 1-516-512-3133

 Email: [info@creative-biomart.com](mailto:info@creative-biomart.com)  Fax: 1-631-938-8127

 45-1 Ramsey Road, Shirley, NY 11967, USA