

Recombinant Human HIST1H1E Protein, GST-tagged

Cat. No. HIST1H1E-4775H Lot. No. (See product label)

SPECIFICATION

Product Overview	Human HIST1H1E full-length ORF (BAG36431.1, 1 a.a. - 219 a.a.) recombinant protein with GST tag at N-terminal.
Species	Human
Source	Wheat Germ
Description	<p>Histones are basic nuclear proteins responsible for nucleosome structure of the chromosomal fiber in eukaryotes. Two molecules of each of the four core histones (H2A, H2B, H3, and H4) form an octamer, around which approximately 146 bp of DNA is wrapped in repeating units, called nucleosomes. The linker histone, H1, interacts with linker DNA between nucleosomes and functions in the compaction of chromatin into higher order structures. This gene is intronless and encodes a member of the histone H1 family. Transcripts from this gene lack polyA tails but instead contain a palindromic termination element. This gene is found in the large histone gene cluster on chromosome 6. [provided by RefSeq]</p>
Molecular Mass	50.49 kDa
AA Sequence	<p>MSETAPAAPAAPAPAEKTPVKKKARKSAGAAKRKASGPPVSELITKAVAASKERSG VSLAALKKALAAAGYDVEKNNRIKLGKSLVSKGTLVQTKGTGASGSFKLNKKAAS GEAKPKAKKAGAAKAKKPAGAAKPKKVTGAATPKKSAKKTPKKAKKPAAAAGAKK AKSPKKAKAAKPKKAPKSPAKAKAVKPKAAKPKTAKPKAAKPKKAAAKKK</p>
Applications	Enzyme-linked Immunoabsorbent Assay

 Tel: 1-631-559-9269 1-516-512-3133

 Email: info@creative-biomart.com  Fax: 1-631-938-8127

 45-1 Ramsey Road, Shirley, NY 11967, USA

Western Blot (Recombinant protein)
Antibody Production
Protein Array

Notes	Best use within three months from the date of receipt of this protein.
Storage	Store at -8 centigrade. Aliquot to avoid repeated freezing and thawing.
Storage Buffer	50 mM Tris-HCl, 10 mM reduced Glutathione, pH=8.0 in the elution buffer.

GENE INFORMATION

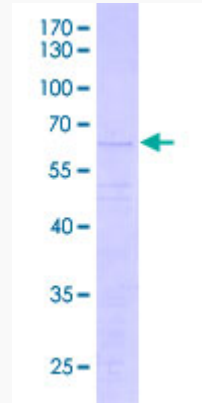
Gene Name	HIST1H1E histone cluster 1, H1e [Homo sapiens]
Official Symbol	HIST1H1E
Synonyms	HIST1H1E; histone cluster 1, H1e; H1 histone family, member 4 , H1F4, histone 1, H1e; histone H1.4; H1.4; H1e; H1s 4; histone H1b; histone 1, H1e; H1 histone family, member 4; H1E; H1F4; dJ221C16.5; MGC116819;
Gene ID	3008
mRNA Refseq	NM_005321
Protein Refseq	NP_005312
MIM	142220
UniProt ID	P10412

 Tel: 1-631-559-9269 1-516-512-3133

 Email: info@creative-biomart.com  Fax: 1-631-938-8127

 45-1 Ramsey Road, Shirley, NY 11967, USA

**Quality Control
Testing**



12.5% SDS-PAGE Stained with Coomassie Blue

 Tel: 1-631-559-9269 1-516-512-3133

 Email: info@creative-biomart.com  Fax: 1-631-938-8127

 45-1 Ramsey Road, Shirley, NY 11967, USA