

Recombinant Human HIST2H2AC Protein, GST-tagged

Cat. No. HIST2H2AC-4809H **Lot. No.** (See product label)

SPECIFICATION

Product Overview	Human HIST2H2AC full-length ORF (NP_003508.1, 1 a.a. - 129 a.a.) recombinant protein with GST-tag at N-terminal.
Species	Human
Source	Wheat Germ
Description	Histones are basic nuclear proteins that are responsible for the nucleosome structure of the chromosomal fiber in eukaryotes. Two molecules of each of the four core histones (H2A, H2B, H3, and H4) form an octamer, around which approximately 146 bp of DNA is wrapped in repeating units, called nucleosomes. The linker histone, H1, interacts with linker DNA between nucleosomes and functions in the compaction of chromatin into higher order structures. This gene is intronless and encodes a member of the histone H2A family. [provided by RefSeq
Molecular Mass	40.4 kDa
AA Sequence	MSGRGKQGGKARAKAKSRSSRAGLQFPVGRVHRLLRKGNYAERVGAGAPVYMAA VLEYLTAEILELAGNAARDNKKTRIIPRHLQLAIRNDEELNKLKLVITIAQGGVLPNIQA VLLPKKTESHKAKSK
Applications	Enzyme-linked Immunoabsorbent Assay Western Blot (Recombinant protein) Antibody Production Protein Array

 Tel: 1-631-559-9269 1-516-512-3133

 Email: info@creative-biomart.com  Fax: 1-631-938-8127

 45-1 Ramsey Road, Shirley, NY 11967, USA

Notes	Best use within three months from the date of receipt of this protein.
Storage	Store at -8 centigrade. Aliquot to avoid repeated freezing and thawing.
Storage Buffer	50 mM Tris-HCl, 10 mM reduced Glutathione, pH=8.0 in the elution buffer.

GENE INFORMATION

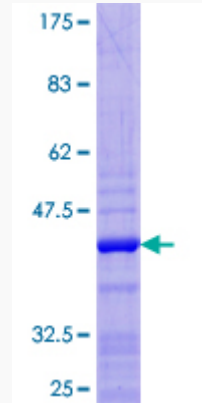
Gene Name	HIST2H2AC histone cluster 2, H2ac [Homo sapiens]
Official Symbol	HIST2H2AC
Synonyms	H2A; H2A/q; H2AFQ; H2A-GL101
Gene ID	8338
mRNA Refseq	NM_003517
Protein Refseq	NP_003508
MIM	602797
UniProt ID	Q16777

 Tel: 1-631-559-9269 1-516-512-3133

 Email: info@creative-biomart.com  Fax: 1-631-938-8127

 45-1 Ramsey Road, Shirley, NY 11967, USA

**Quality Control
Testing**



12.5% SDS-PAGE Stained with Coomassie Blue.

 Tel: 1-631-559-9269 1-516-512-3133

 Email: info@creative-biomart.com  Fax: 1-631-938-8127

 45-1 Ramsey Road, Shirley, NY 11967, USA