

## Recombinant Human HK1 Protein, Avi tagged

Cat. No. HK1-41H Lot. No. (See product label)

### SPECIFICATION

<b>Product Overview</b>	Recombinant Human HK1 protein with Avi tag was expressed in E.coli.
<b>Species</b>	Human
<b>Source</b>	E.coli
<b>ProteinLength</b>	1-917 aa
<b>Description</b>	Hexokinases phosphorylate glucose to produce glucose-6-phosphate, the first step in most glucose metabolism pathways. This gene encodes a ubiquitous form of hexokinase which localizes to the outer membrane of mitochondria. Mutations in this gene have been associated with hemolytic anemia due to hexokinase deficiency. Alternative splicing of this gene results in several transcript variants which encode different isoforms, some of which are tissue-specific.
<b>Form</b>	Sterile PBS, pH7.4, 0.1% SKL
<b>Molecular Mass</b>	105 kDa
<b>AASequence</b>	MGSSGLNDIFEAQKIEWHESSGLVPRGSHMIAAQLLAYFTELKDDQVKKIDKYL YAMRLSDETLIDIMTRFRKEMKNGLSRDFNPTATVKMLPTFVRSIPDGSEKGFIALDLG GSSFRILRVQVNHEKNQNVHMESEVYDTPENIVHGSGSQLFDHVAECLGDFMEKRK IKDKKLPVGFTFSFPCQQSKIDEAILITWTKRFKASGVEGADVVKLLNKAIKKRGDYDA NIVAVVNDTVGTMTCGYDDQHCEVGLIIGTGTNACYMEELRHIDLVEGDEGRMCIN TEWGAFGDDGSLEDIRTEFDREIDRGLNPGKQLFEKMOVSGMYLGELVRLILVKMAK

Tel: 1-631-559-9269 1-516-512-3133

Email: [info@creative-biomart.com](mailto:info@creative-biomart.com) Fax: 1-631-938-8127

45-1 Ramsey Road, Shirley, NY 11967, USA

EGLLFEGRITPELLTRGKFNTSDVSAIEKNKEGLHNAKEILTRLGVPEPSDDDCVSVQH  
 VCTIVSFRSANLVAATLGAILNRLRDNKGTPLRRTTVGVDGSLYKTHPQYSRRFHKTL  
 RRLVPDSDVRFLLESSESGSGKGAAMVTAVAYRLAEQHRQIEETLAHFHLTKDMLLEVK  
 KRMRAEMELGLRKQTHNNAVVKMLPSFVRRTPDGTENGDFLALDLGGTNFRVLLVK  
 IRSGKKRTVEMHNKIYAIPIEIMQGTGEELFDHIVSCISDFLDYMGIKGPRMPLGFTFS  
 FPCQQTSLDAGILITWTKGFKATDCVGHDVVTLRDAIKRREEFDLDVVAVVNDTVG  
 TMMTCAYEPTCEVGLIVGTGSNACYMEEMKNVEMVEGDQGQMCINMEWGAFGD  
 NGCLDDIRTHYDRLVDEYSLNAGKQRYEKMISGMYLGEIVRNILIDFTKKGFLFRGQI  
 SETLKTRGIFETKFLSQIESDRLALLQVRAILQQLGLNSTCDDSVLKTVCVVSRRAA  
 QLCGAGMAAVVDKIRENRGLDRLNVTGVDGTLYKLHPHFSRIMHQTVKELSPKCN  
 VSFLLEDGSGKGAALITAVGVRLRTEASS

**Purity** > 90% by SDS-PAGE

**Storage** Store it under sterile conditions at -20 to -80 centigrade. It is recommended that the protein be aliquoted for optimal storage. Avoid repeated freeze-thaw cycles.

**Concentration** 0.15 mg/mL by BCA

## GENE INFORMATION

**Gene Name** [HK1 hexokinase 1 \[ Homo sapiens \(human\) \]](#)

**Official Symbol** [HK1](#)

**Synonyms** HK1; hexokinase 1; hexokinase-1; HK I; glycolytic enzyme; hexokinase type I; brain form hexokinase; HKI; HXK1; HK1-ta; HK1-tb; HK1-tc;

**Gene ID** [3098](#)

**mRNA Refseq** [NM\\_000188](#)

 Tel: 1-631-559-9269 1-516-512-3133

 Email: [info@creative-biomart.com](mailto:info@creative-biomart.com)  Fax: 1-631-938-8127

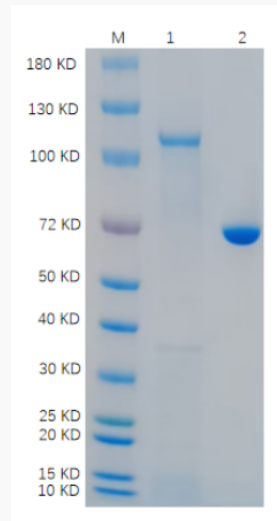
 45-1 Ramsey Road, Shirley, NY 11967, USA

**Protein Refseq** NP\_000179

**MIM** 142600

**UniProt ID** P19367

**SDS-PAGE**



Reducing 4%-20% SDS-PAGE (CBB stained) analysis profile of purified HK1. 1.

HK1: 1  $\mu$ g 2. BSA: 1  $\mu$ g

 Tel: 1-631-559-9269 1-516-512-3133

 Email: [info@creative-biomart.com](mailto:info@creative-biomart.com)  Fax: 1-631-938-8127

 45-1 Ramsey Road, Shirley, NY 11967, USA