

Recombinant Full Length Human HK1 Protein, C-Flag-tagged

Cat. No. HK1-832HFL Lot. No. (See product label)

SPECIFICATION

Product Overview	Recombinant Full Length Human HK1 Protein, fused to Flag-tag at C-terminus, was expressed in Mammalian cells.
Species	Human
Source	Mammalian Cells
Description	Hexokinases phosphorylate glucose to produce glucose-6-phosphate, the first step in most glucose metabolism pathways. This gene encodes a ubiquitous form of hexokinase which localizes to the outer membrane of mitochondria. Mutations in this gene have been associated with hemolytic anemia due to hexokinase deficiency. Alternative splicing of this gene results in several transcript variants which encode different isoforms, some of which are tissue-specific.
Form	25 mM Tris HCl, pH 7.3, 100 mM glycine, 10% glycerol.
Molecular Mass	102.3 kDa
AA Sequence	MIAAQLLAYFTELKDDQVKKIDKYLAMRLSDETLIDIMTRFRKEMKNGLSRDFNPT ATVKMLPTFVRS IPDGSEKGFIALDLGGSSFRILRVQVNHEKNQNVHMESEVYDTP ENIVHGSGSQLFDHVAECLGDFMEK RKIKDKKLPVGFTFSFPCQQSKIDEAILITWTK RFKASGVEGADVVKLLNKAIKKRGDYDANIVAVVNDT VGTMMTCGYDDQHCEVGLI IGTGTNACYMEELRHIDLVEGDEGRMCINTEWGAFGDDGSLEDIRTEFDRE IDRGS L NPGKQLFEKMGVSGMYLGELVRLILVKMAKEGLLFEGRITPELLTRGKFNTSDVSAIEK NKEGLH NAKEILTRLGVEPSDDDCVSVQHVCTIVSFRSANLVAATLGAILNRLRDNK

 Tel: 1-631-559-9269 1-516-512-3133

 Email: info@creative-biomart.com  Fax: 1-631-938-8127

 45-1 Ramsey Road, Shirley, NY 11967, USA

GTPRLRTTVGVDGSLYKTH PQYSRRFHKTLRRLVPDSDVRFLSESGSGKGAAMV
TAVAYRLAEQHRQIEETLAHFHLTKDMLLEVKKR MRAEMELGLRKQTHNNAVVKML
PSFVRRTPDGTENGDFLALDLGGTNFRVLLVKIRSGKKRTVEMHNKIY AIPIEQGT
GEELFDHIVSCISDFLDYMGIKGPRMPLGFTFSFPCQQTSLDAGILITWTKGFKATDC
VG HDVVTLLRDAIKRREEFDLDVVAVVNDTVGTMTCAYEEPTCEVGLIVGTGSNA
CYMEEMKNVEMVEGDQ GQMCINMEWGAFGDNGCLDDIRTHYDRLVDEYSLNAGK
QRYEKMISGMYLGEIVRNILIDFTKKGFLFRG QISETLKTRGIFETKFLSQIESDRLALL
QVRAILQQGLNSTCDDSVLTKVCGVSRRAAQLCGAGMAA VVDKIRENRGLDRL
NVTVGVDGTLYKLHPHFSRIMHQTVKELSPKCNVSFLLSESGSGKGAALITAVGVR
LRTEASSTRTRPLEQKLISEEDLAANDILDYKDDDDKV

Purity	> 80% as determined by SDS-PAGE and Coomassie blue staining.
Stability	Stable for 12 months from the date of receipt of the product under proper storage and handling conditions. Avoid repeated freeze-thaw cycles.
Storage	Store at -80 centigrade.
Concentration	>50 ug/mL as determined by microplate BCA method.
Preparation	Recombinant protein was captured through anti-DDK affinity column followed by conventional chromatography steps.
Protein Families	Druggable Genome
Protein Pathways	Amino sugar and nucleotide sugar metabolism, Fructose and mannose metabolism, Galactose metabolism, Glycolysis / Gluconeogenesis, Insulin signaling pathway, Metabolic pathways, Starch and sucrose metabolism, Type II diabetes mellitus
Full Length	Full L.

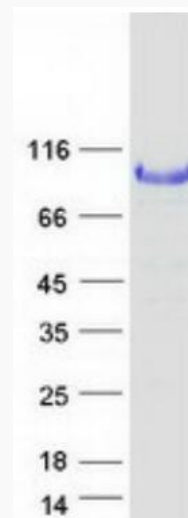
 Tel: 1-631-559-9269 1-516-512-3133

 Email: info@creative-biomart.com  Fax: 1-631-938-8127

 45-1 Ramsey Road, Shirley, NY 11967, USA

GENE INFORMATION

Gene Name	HK1 hexokinase 1 [Homo sapiens (human)]
Official Symbol	HK1
Synonyms	HK; HKD; HKI; HXK1; RP79; HMSNR; HK1-ta; HK1-tb; HK1-tc; NEDVIBA; hexokinase
Gene ID	3098
mRNA Refseq	NM_000188.3
Protein Refseq	NP_000179.2
MIM	142600
UniProt ID	P19367



 Tel: 1-631-559-9269 1-516-512-3133

 Email: info@creative-biomart.com  Fax: 1-631-938-8127

 45-1 Ramsey Road, Shirley, NY 11967, USA



Coomassie blue staining of purified HK1 protein.

 Tel: 1-631-559-9269 1-516-512-3133

 Email: info@creative-biomart.com  Fax: 1-631-938-8127

 45-1 Ramsey Road, Shirley, NY 11967, USA