

Recombinant Full Length Human HK2 Protein, C-Flag-tagged

Cat. No. HK2-359HFL **Lot. No.** (See product label)

SPECIFICATION

Product Overview	Recombinant Full Length Human HK2 Protein, fused to Flag-tag at C-terminus, was expressed in Mammalian cells.
Species	Human
Source	Mammalian Cells
Description	Hexokinases phosphorylate glucose to produce glucose-6-phosphate, the first step in most glucose metabolism pathways. This gene encodes hexokinase 2, the predominant form found in skeletal muscle. It localizes to the outer membrane of mitochondria. Expression of this gene is insulin-responsive, and studies in rat suggest that it is involved in the increased rate of glycolysis seen in rapidly growing cancer cells.
Form	25 mM Tris HCl, pH 7.3, 100 mM glycine, 10% glycerol.
Molecular Mass	102.2 kDa
AA Sequence	MIASHLLAYFFTELNHDQVQKVDQYLYHMRLSDETLLEISKRFRKEMEKGLGATTHP TAAVKMLPTFVRS TPDGTEHGEFLALDLGGTNFRVLWVKVTDNGLQKVMENQIYA IPEDIMRGSQTQLFDHIAECLANFMDK LQIKDKKLPLGFTFSFPCHQTKLDESFLVSW TKGFKSSGVEGRDVVALIRKAIQRRGDFDIDIVAVVNDT VGTMMTCGYDDHNCEIGL IVGTGSNACYMEEMRHIDMVEGDEGRMCINMEWGAFGDDGSLNDIRTEFDQE IDM GSLNPGKQLFEKMISGMYMGELVRLILVKMAKEELLFGGKLSPELLNTGRFETKDISD IEGEKDGIR KAREVLMRLGLDPTQEDCVATHRICQIVSTRSASLCAATLAAVLQRIKE

 Tel: 1-631-559-9269 1-516-512-3133

 Email: info@creative-biomart.com  Fax: 1-631-938-8127

 45-1 Ramsey Road, Shirley, NY 11967, USA

NKGEERLRSTIGVDGGSVYKKH PHFAKRLHKTVRRLVPGCDVRFLRSEDGSGKGAA
MVTAVAYRLADQHRARQKTLEHLQLSHDQLLEVKRR MKVEMERGLSKETHASAPV
KMLPTYVCATPDGTEKGDFLALDLGGTNFRVLLVVRNGKWGGVEMHNKIY AIPQE
VMHGTGDELFDHIVQCIADFLEYMGMGVSLPLGFTFSFPCQQNSLDESILLKWTGK
FKASGCEG EDVVTLLKEAIHRREEFDLDVVAVVNDTVGTMTCGFEDPHCEVGLIV
GTGSNACYMEEMRNVELVEGEE GRMCVNMEWGAFGDNGCLDDFRTEFDVAVDE
LSLNPGKQRF EK MISGMYLGEIVRNILIDFTKRGLLFRG RISERLKTRGIFETKFLSQIE
SDCLALLQVRAILQHLGLESTCDDSIIVKEVCTVVARAAQLCGAGMAA VVDRIREN
RGLDALKVTVGVDGTYKLHPHFAKVMHETVKDLAPKCDVSFLQSEDGSGKGAALIT
AVACR
IREAGQRTRTRPLEQKLISEEDLAANDILDYKDDDDKV

Purity > 80% as determined by SDS-PAGE and Coomassie blue staining.

Stability Stable for 12 months from the date of receipt of the product under proper storage and handling conditions. Avoid repeated freeze-thaw cycles.

Storage Store at -80 centigrade.

Concentration >50 ug/mL as determined by microplate BCA method.

Preparation Recombinant protein was captured through anti-DDK affinity column followed by conventional chromatography steps.

Protein Families Druggable Genome

Protein Pathways Amino sugar and nucleotide sugar metabolism, Fructose and mannose metabolism, Galactose metabolism, Glycolysis / Gluconeogenesis, Insulin signaling pathway, Metabolic pathways, Starch and sucrose metabolism, Type II diabetes mellitus

 Tel: 1-631-559-9269 1-516-512-3133

 Email: info@creative-biomart.com  Fax: 1-631-938-8127

 45-1 Ramsey Road, Shirley, NY 11967, USA

Full Length Full L.

GENE INFORMATION

Gene Name HK2 hexokinase 2 [Homo sapiens (human)]

Official Symbol HK2

Synonyms HKII; HXK2

Gene ID 3099

mRNA Refseq NM_000189.5

Protein Refseq NP_000180.2

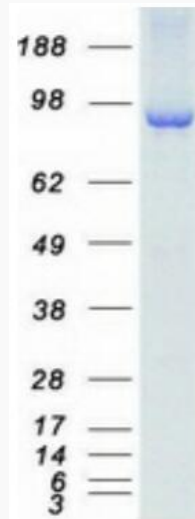
MIM 601125

UniProt ID P52789

 Tel: 1-631-559-9269 1-516-512-3133

 Email: info@creative-biomart.com  Fax: 1-631-938-8127

 45-1 Ramsey Road, Shirley, NY 11967, USA



Coomassie blue staining of purified HK2 protein.

 Tel: 1-631-559-9269 1-516-512-3133

 Email: info@creative-biomart.com  Fax: 1-631-938-8127

 45-1 Ramsey Road, Shirley, NY 11967, USA