

Recombinant Human HLA-A protein, His-Avi-tagged

Cat. No. HLA-A-069H **Lot. No.** (See product label)

SPECIFICATION

Product Overview	Recombinant Human HLA-A*02:01&B2M&WT-1 (RMFPNAPYL) Tetramer Protein(0A140T913(HLA-A*02:01)&P61769(B2M)&RMFPNAPYL)(Gly25-Thr305(HLA-A*02:01), Ile21-Met119(B2M) and RMFPNAPYL peptide) is expressed from HEK293 with His tag and Avi tag at the C-Terminus,tetramer is assembled by biotinylated monomer and streptavidin.
Species	Human
Source	HEK293
ProteinLength	Gly25-Thr305(HLA-A*02:01), Ile21-Met119(B2M) and RMFPNAPYL peptide
Tag	C-His-Avi
Form	Lyophilized from 0.22µm filtered solution in PBS (pH 7.4). Normally 8% trehalose is added as protectant before lyophilization.
Bio-activity	Immobilized Human HLA-A*02:01&B2M&WT-1 (RMFPNAPYL) Tetramer, His Tag at 1µg/ml (100µl/Well) on the plate. Dose response curve for Anti-HLA-A*02:01&B2M&WT-1 (RMFPNAPYL) Antibody, hFc Tag with the EC50 of 14.2ng/ml determined by ELISA.
Molecular Mass	The protein has a predicted MW of 258 kDa. Due to glycosylation, the protein migrates to 260-265 kDa under Non reducing (N) condition based on Bis-Tris PAGE result.

 Tel: 1-631-559-9269 1-516-512-3133

 Email: info@creative-biomart.com  Fax: 1-631-938-8127

 45-1 Ramsey Road, Shirley, NY 11967, USA

Endotoxin	Less than 1EU per µg by the LAL method.
Purity	> 95% as determined by Bis-Tris PAGE > 95% as determined by HPLC
Storage	Store at -20 to -80°C for 12 months as supplied from date of receipt. -80°C for 3 months after reconstitution. Recommend to aliquot the protein into smaller quantities for optimal storage. Please minimize freeze-thaw cycles.
Reconstitution	Centrifuge the tube before opening. Reconstituting to a concentration more than 100 µg/ml is recommended. Dissolve the lyophilized protein in distilled water.

GENE INFORMATION

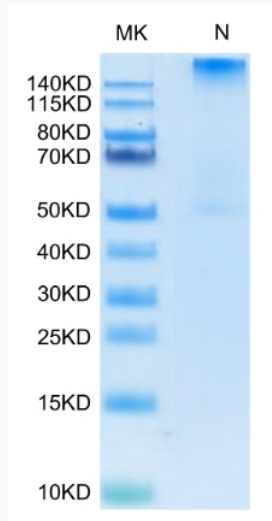
Gene Name	HLA-A major histocompatibility complex, class I, A [Homo sapiens]
Official Symbol	HLA-A
Synonyms	HLA-A; major histocompatibility complex, class I, A; HLA class I histocompatibility antigen, A-1 alpha chain; antigen presenting molecule; leukocyte antigen class I-A; MHC class I antigen HLA-A heavy chain; HLAA; FLJ26655;
Gene ID	3105
mRNA Refseq	NM_001242758
Protein Refseq	NP_001229687
UniProt ID	P01891

 Tel: 1-631-559-9269 1-516-512-3133

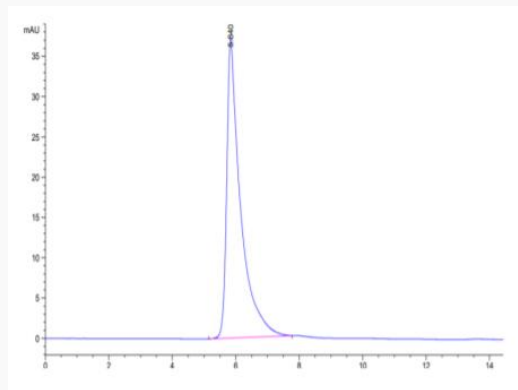
 Email: info@creative-biomart.com  Fax: 1-631-938-8127

 45-1 Ramsey Road, Shirley, NY 11967, USA

Bis-Tris PAGE



ELISA Data



 Tel: 1-631-559-9269 1-516-512-3133

 Email: info@creative-biomart.com  Fax: 1-631-938-8127

 45-1 Ramsey Road, Shirley, NY 11967, USA