

## Recombinant Human HLA-A protein, His-tagged

Cat. No. HLA-A-1448H    Lot. No. (See product label)

### SPECIFICATION

<b>Product Overview</b>	Recombinant Human HLA-A protein(P30443)(25-308aa), fused to C-terminal His tag, was expressed in Insect cell.
<b>Species</b>	Human
<b>Source</b>	Insect Cells
<b>ProteinLength</b>	25-308aa
<b>Form</b>	If the delivery form is liquid, the default storage buffer is Tris/PBS-based buffer, 5%-50% glycerol. If the delivery form is lyophilized powder, the buffer before lyophilization is Tris/PBS-based buffer, 6% Trehalose, pH 8.0.
<b>Molecular Mass</b>	38.3 kDa
<b>Purity</b>	Greater than 85% as determined by SDS-PAGE.
<b>Storage</b>	Store at -20°C/-80°C upon receipt, aliquoting is necessary for mutiple use. Avoid repeated freeze-thaw cycles.
<b>Reconstitution</b>	It is recommended that sterile water be added to the vial to prepare a stock solution of 0.2 ug/ul. Centrifuge the vial at 4°C before opening to recover the entire contents.

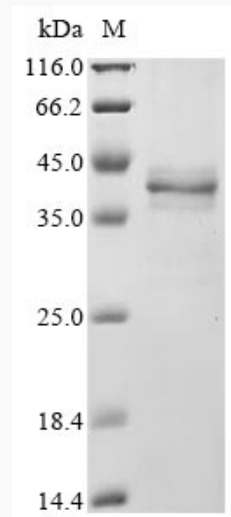
### GENE INFORMATION

 Tel: 1-631-559-9269    1-516-512-3133

 Email: [info@creative-biomart.com](mailto:info@creative-biomart.com)     Fax: 1-631-938-8127

 45-1 Ramsey Road, Shirley, NY 11967, USA

<b>Gene Name</b>	HLA-A major histocompatibility complex, class I, A [ Homo sapiens ]
<b>Official Symbol</b>	HLA-A
<b>Synonyms</b>	HLA-A; major histocompatibility complex, class I, A; HLA class I histocompatibility antigen, A-1 alpha chain; antigen presenting molecule; leukocyte antigen class I-A; MHC class I antigen HLA-A heavy chain; HLAA; FLJ26655;
<b>Gene ID</b>	3105
<b>mRNA Refseq</b>	NM_001242758
<b>Protein Refseq</b>	NP_001229687
<b>UniProt ID</b>	P01891

**SDS-PAGE**


Tel: 1-631-559-9269 1-516-512-3133

Email: [info@creative-biomart.com](mailto:info@creative-biomart.com) Fax: 1-631-938-8127

45-1 Ramsey Road, Shirley, NY 11967, USA