

Recombinant Human HLA-A protein, His&Myc-tagged

Cat. No. HLA-A-1500H Lot. No. (See product label)

SPECIFICATION

Product Overview	Recombinant Human HLA-A protein(P30443)(25-308aa), fused to N-terminal His tag and C-terminal Myc tag, was expressed in E. coli.
Species	Human
Source	E.coli
ProteinLength	25-308aa
Form	If the delivery form is liquid, the default storage buffer is Tris/PBS-based buffer, 5%-50% glycerol. If the delivery form is lyophilized powder, the buffer before lyophilization is Tris/PBS-based buffer, 6% Trehalose, pH 8.0.
Molecular Mass	40.1 kDa
Purity	Greater than 85% as determined by SDS-PAGE.
Storage	Store at -20°C/-80°C upon receipt, aliquoting is necessary for mutiple use. Avoid repeated freeze-thaw cycles.
Reconstitution	It is recommended that sterile water be added to the vial to prepare a stock solution of 0.2 ug/ul. Centrifuge the vial at 4°C before opening to recover the entire contents.

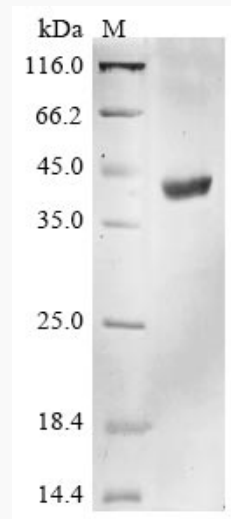
GENE INFORMATION

 Tel: 1-631-559-9269 1-516-512-3133

 Email: info@creative-biomart.com  Fax: 1-631-938-8127

 45-1 Ramsey Road, Shirley, NY 11967, USA

Gene Name	HLA-A major histocompatibility complex, class I, A [Homo sapiens]
Official Symbol	HLA-A
Synonyms	HLA-A; major histocompatibility complex, class I, A; HLA class I histocompatibility antigen, A-1 alpha chain; antigen presenting molecule; leukocyte antigen class I-A; MHC class I antigen HLA-A heavy chain; HLAA; FLJ26655;
Gene ID	3105
mRNA Refseq	NM_001242758
Protein Refseq	NP_001229687
UniProt ID	P01891

SDS-PAGE


 Tel: 1-631-559-9269 1-516-512-3133

 Email: info@creative-biomart.com  Fax: 1-631-938-8127

 45-1 Ramsey Road, Shirley, NY 11967, USA