

Recombinant Human HLA-A Protein, Myc/DDK-tagged, C13 and N15-labeled

Cat. No. HLA-A-2390H **Lot. No.** (See product label)

SPECIFICATION

Product Overview

HLA MS Standard C13 and N15-labeled recombinant protein (NP_002107) with a C-terminal MYC/DDK tag, was expressed in HEK293 cells.

Species

Human

Source

HEK293

Description

HLA-A belongs to the HLA class I heavy chain paralogues. This class I molecule is a heterodimer consisting of a heavy chain and a light chain (beta-2 microglobulin). The heavy chain is anchored in the membrane. Class I molecules play a central role in the immune system by presenting peptides derived from the endoplasmic reticulum lumen. They are expressed in nearly all cells. The heavy chain is approximately 45 kDa and its gene contains 8 exons. Exon 1 encodes the leader peptide, exons 2 and 3 encode the alpha1 and alpha2 domains, which both bind the peptide, exon 4 encodes the alpha3 domain, exon 5 encodes the transmembrane region, and exons 6 and 7 encode the cytoplasmic tail. Polymorphisms within exon 2 and exon 3 are responsible for the peptide binding specificity of each class one molecule. Typing for these polymorphisms is routinely done for bone marrow and kidney transplantation. Hundreds of HLA-A alleles have been described.

Molecular Mass

40.8 kDa

AA Sequence

MAVMAPRTLIIIIISGALALTQTWAGSHSMRYFFTSVSRPGRGEPRIAVGYVDDTQ

 Tel: 1-631-559-9269 1-516-512-3133

 Email: info@creative-biomart.com  Fax: 1-631-938-8127

 45-1 Ramsey Road, Shirley, NY 11967, USA



FVRFSDAASQKMEPRAPWIEQEGPEYWDQETRNMKAHSQTDSPANLGLTRGYYN
 QSEDGSHTIQIMYGCDVGPDGRFLRGYRQDAYDGKDYIALNEDLRSWTAADMAAQI
 TKRKWEAVHAAEQRRVYLEGRCVDGLRRYLENGKETLQRTDPPKTHMTHHPISDH
 EATLRCWALGFYPAEITLTWQRDGEDQTQDTELVETRPAGDGTGFKWAAVVPSG
 EEQRYTCHVQHEGLPKPLTLRWELSSQPTIPIVGIAGLVLLGAVITGAVVAAVMWRR
 KSSDRKGGSYTQAASSDSAQGSVSLTACKVTRTRPLEQKLISEEDLAANDILDYKD
 DDDKV

Purity	> 80% as determined by SDS-PAGE and Coomassie blue staining
Stability	Stable for 3 months from receipt of products under proper storage and handling conditions.
Storage	Store at -80 centigrade. Avoid repeated freeze-thaw cycles.
Concentration	50 µg/mL as determined by BCA
Storage Buffer	100 mM glycine, 25 mM Tris-HCl, pH 7.3.

GENE INFORMATION

Gene Name	HLA-A major histocompatibility complex, class I, A [Homo sapiens (human)]
Official Symbol	HLA-A
Synonyms	HLA-A; major histocompatibility complex, class I, A; HLA class I histocompatibility antigen, A-1 alpha chain; antigen presenting molecule; leukocyte antigen class I-A; MHC class I antigen HLA-A heavy chain; HLAA; FLJ26655;
Gene ID	3105

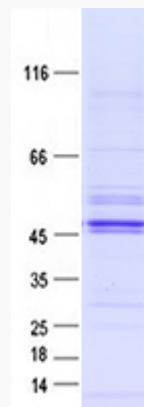
mRNA Refseq [NM_002116](#)

Protein Refseq [NP_002107](#)

MIM [142800](#)

UniProt ID [P01891](#)

SDS-PAGE



 Tel: 1-631-559-9269 1-516-512-3133

 Email: info@creative-biomart.com  Fax: 1-631-938-8127

 45-1 Ramsey Road, Shirley, NY 11967, USA