

Recombinant Human HLA-A*0201 NY-ESO-1 (SLLMWITQC) complex protein, His-Avi-tagged, Biotinylated

Cat. No. HLA-A-573HB Lot. No. (See product label)

SPECIFICATION

Product Overview	Biotinylated Human HLA-A*0201 NY-ESO-1 (SLLMWITQC) complex Protein is expressed from mammalian with a His and avi tag at the C-terminal. It contains Gly 25 - Thr 305 (HLA-A*0201),Ile21-Met119 (B2M) and SLLMWITQC peptide.
Species	Human
Source	HEK293
ProteinLength	It contains Gly 25 - Thr 305 (HLA-A*0201),Ile21-Met119 (B2M) and SLLMWITQC peptide.
Description	NY-ESO-1 is a human tumor antigen of the cancer/testis family. It is highly expressed in many poor-prognosis melanomas. The Human HLA-A*0201 NY-ESO-1 (SLLMWITQC) complex Protein is a complex of HLA-A*0201 of the MHC Class I, B2M and SLLMWITQC peptide of the NY-ESO-1.
Form	Supplied as 0. 22um filtered solution in PBS (pH 7. 4).
Molecular Mass	Human HLA-A*0201 NY-ESO-1 (SLLMWITQC) complex Protein has a predicted MW of 50. 5kDa. The protein migrates to 50-60 kDa based on Bis-Tris PAGE due to glycosylation.
Endotoxin	Less than 0. 05EU per ug by the LAL method.

 Tel: 1-631-559-9269 1-516-512-3133

 Email: info@creative-biomart.com  Fax: 1-631-938-8127

 45-1 Ramsey Road, Shirley, NY 11967, USA

Purity	> 95% as determined by Bis-Tris PAGE; > 95% as determined by HPLC
Storage	The product should be stored at -70°C. Please do not repeated freeze-thaw cycles.
Reconstitution	It is recommended that sterile water be added to the vial to prepare a stock solution of 0.2 ug/ul. Centrifuge the vial at 4°C before opening to recover the entire contents.
Conjugation	Biotin

GENE INFORMATION

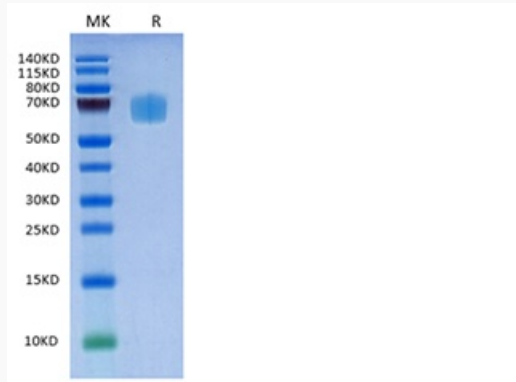
Gene Name	HLA-A major histocompatibility complex, class I, A [Homo sapiens]
Official Symbol	HLA-A
Synonyms	MHC; MY-ESO-1;Cancer/testis antigen 6. 1;L antigen family member 2;CT6. 1;LAGE-2
Gene ID	3105
mRNA Refseq	NM_001242758
Protein Refseq	NP_001229687
MIM	142800
UniProt ID	P01891

 Tel: 1-631-559-9269 1-516-512-3133

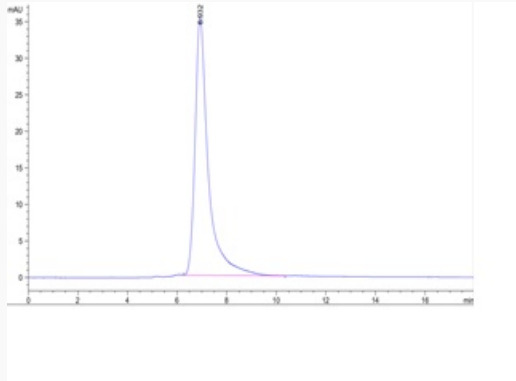
 Email: info@creative-biomart.com  Fax: 1-631-938-8127

 45-1 Ramsey Road, Shirley, NY 11967, USA

Tris-Bis PAGE



HPLC data



 Tel: 1-631-559-9269 1-516-512-3133

 Email: info@creative-biomart.com  Fax: 1-631-938-8127

 45-1 Ramsey Road, Shirley, NY 11967, USA