

Recombinant Human HLA-A0201 gp100 (YLEPGPVTA) complex protein, His-Avi-tagged

Cat. No. HLA-A-732H Lot. No. (See product label)

SPECIFICATION

Product Overview	Recombinant Human HLA-A*0201 gp100 (YLEPGPVTA) complex Protein is expressed from mammalian with a polyHis and avi tag at the C-terminal. It contains Gly 25 - Thr 305 (HLA-A*0201),Ile21-Met119 (B2M) and YLEPGPVTA peptide design.
Species	Human
Source	HEK293
ProteinLength	It contains Gly 25 - Thr 305 (HLA-A*0201),Ile21-Met119 (B2M) and YLEPGPVTA peptide design.
Description	Glycoprotein 100, gp100 or Melanocyte protein PMEL is 661 amino acids long and is a type I transmembrane glycoprotein enriched in melanosomes, which are the melanin-producing organelles in melanocytes. This protein is involved in melanosome maturation. The Human HLA-A*0201 gp100 (YLEPGPVTA) complex Protein is a complex of HLA-A*0201 of the MHC Class I, B2M and YLEPGPVTA peptide of the gp100.
Form	Supplied as 0.22um filtered solution in PBS (pH 7.4).
Molecular Mass	The protein has a predicted MW of 50.4 kDa.Due to glycosylation, the protein migrates to 52-62 KDa based on Bis-Tris PAGE result.

 Tel: 1-631-559-9269 1-516-512-3133

 Email: info@creative-biomart.com  Fax: 1-631-938-8127

 45-1 Ramsey Road, Shirley, NY 11967, USA

Endotoxin	Less than 1EU per ug by the LAL method.
Purity	> 95% as determined by Bis-Tris PAGE; > 95% as determined by HPLC
Storage	The product should be stored at -70°C. Please do not repeated freeze-thaw cycles.
Reconstitution	It is recommended that sterile water be added to the vial to prepare a stock solution of 0.2 ug/ul. Centrifuge the vial at 4°C before opening to recover the entire contents.

GENE INFORMATION

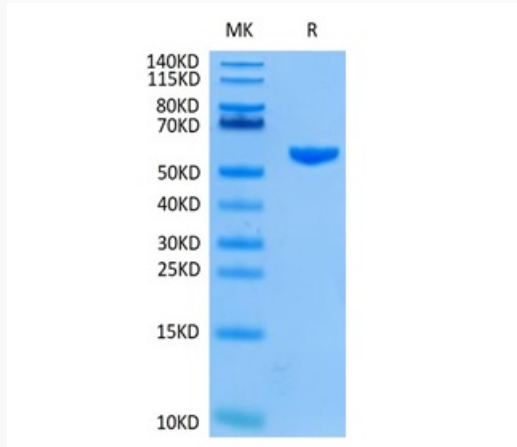
Gene Name	HLA-A major histocompatibility complex, class I, A [Homo sapiens]
Official Symbol	HLA-A
Synonyms	HLA0201, MHC I,gp100,Glycoprotein 100,ME20-M,Melanocytes lineage-specific antigen GP100,P100
Gene ID	3105
mRNA Refseq	NM_001242758
Protein Refseq	NP_001229687
UniProt ID	P01891

 Tel: 1-631-559-9269 1-516-512-3133

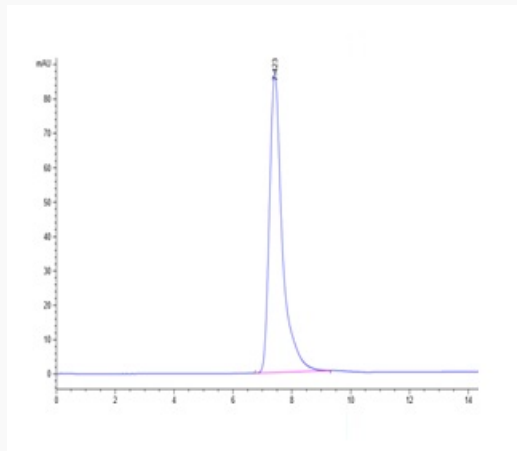
 Email: info@creative-biomart.com  Fax: 1-631-938-8127

 45-1 Ramsey Road, Shirley, NY 11967, USA

Tris-Bis PAGE



HPLC data

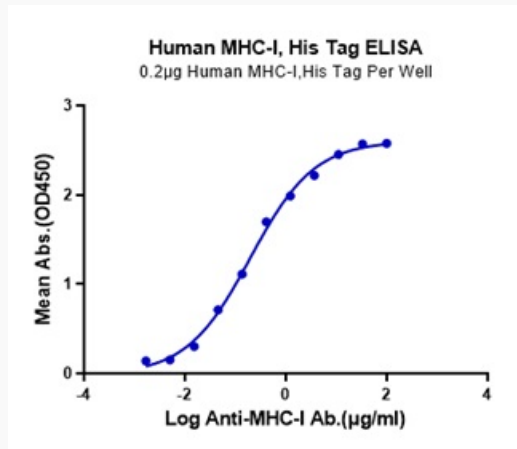


 Tel: 1-631-559-9269 1-516-512-3133

 Email: info@creative-biomart.com  Fax: 1-631-938-8127

 45-1 Ramsey Road, Shirley, NY 11967, USA

ELISA data



 Tel: 1-631-559-9269 1-516-512-3133

 Email: info@creative-biomart.com  Fax: 1-631-938-8127

 45-1 Ramsey Road, Shirley, NY 11967, USA