

Recombinant Human HLA-A0201 MAGE-A4 (GVYDGREHTV) complex protein, His-Avi-tagged

Cat. No. HLA-A-733H **Lot. No.** (See product label)

SPECIFICATION

Product Overview	Human HLA-A*0201 MAGE-A4 (GVYDGREHTV) complex Protein is expressed from mammalian with a polyHis and avi tag at the C-terminal. It contains Gly 25 - Thr 305 (HLA-A*0201),Ile21-Met119 (B2M) and GVYDGREHTV peptide design.
Species	Human
Source	HEK293
ProteinLength	It contains Gly 25 - Thr 305 (HLA-A*0201),Ile21-Met119 (B2M) and GVYDGREHTV peptide design
Description	Melanoma-associated antigen 4 is a protein that in humans is encoded by the MAGEA4 gene.The MAGE- A4 antigen is among the most commonly expressed cancer testis antigens. The Human HLA-A*0201 MAGE-A4 (GVYDGREHTV) complex Protein is a complex of HLA-A*0201 of the MHC Class I, B2M and GVYDGREHTV peptide of the MAGE-A4.
Form	Supplied as 0.22um filtered solution in PBS (pH 7.4).
Molecular Mass	Human HLA-A*0201 MAGE-A4 (GVYDGREHTV) complex Protein has a calculated MW of 50.5kDa. The protein migrates as 52-60 kDa under reducing (R) condition (Bis-Tris PAGE).
Endotoxin	Less than 0.05EU per ug by the LAL method.

 Tel: 1-631-559-9269 1-516-512-3133

 Email: info@creative-biomart.com  Fax: 1-631-938-8127

 45-1 Ramsey Road, Shirley, NY 11967, USA

Purity	> 95% as determined by Bis-Tris PAGE > 95% as determined by HPLC
Storage	The product should be stored at -70°C. Please do not repeated freeze-thaw cycles.
Reconstitution	It is recommended that sterile water be added to the vial to prepare a stock solution of 0.2 ug/ul. Centrifuge the vial at 4°C before opening to recover the entire contents.

GENE INFORMATION

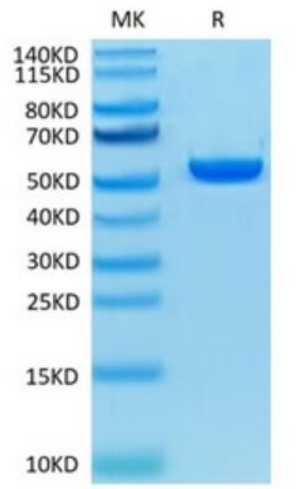
Gene Name	HLA-A major histocompatibility complex, class I, A [Homo sapiens]
Official Symbol	HLA-A
Synonyms	HLA0201, MHC I,MAGE-A4,Melanoma-associated antigen 4,MAGE-4 antigen,Cancer/testis antigen 1.4,CT1.4,MAGE-X2 antigen,MAGE-41 antigen
Gene ID	3105
mRNA Refseq	NM_001242758
Protein Refseq	NP_001229687
UniProt ID	P01891

 Tel: 1-631-559-9269 1-516-512-3133

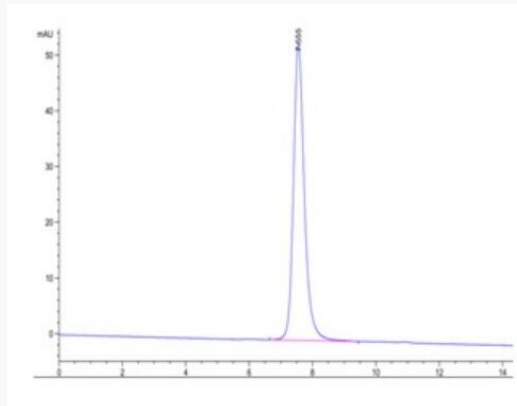
 Email: info@creative-biomart.com  Fax: 1-631-938-8127

 45-1 Ramsey Road, Shirley, NY 11967, USA

Tris-Bis PAGE



HPLC data



 Tel: 1-631-559-9269 1-516-512-3133

 Email: info@creative-biomart.com  Fax: 1-631-938-8127

 45-1 Ramsey Road, Shirley, NY 11967, USA