

Recombinant Human HLA-B Protein, His-tagged

Cat. No. HLA-B-245H Lot. No. (See product label)

SPECIFICATION

Product Overview	Recombinant Human HLA-B(Ser26~Val309) fused with His tag at N-terminal was expressed in E. coli.
Species	Human
Source	E.coli
ProteinLength	Ser26~Val309
Description	<p>HLA-B belongs to the HLA class I heavy chain paralogues. This class I molecule is a heterodimer consisting of a heavy chain and a light chain (beta-2 microglobulin). The heavy chain is anchored in the membrane. Class I molecules play a central role in the immune system by presenting peptides derived from the endoplasmic reticulum lumen. They are expressed in nearly all cells. The heavy chain is approximately 45 kDa and its gene contains 8 exons. Exon 1 encodes the leader peptide, exon 2 and 3 encode the alpha1 and alpha2 domains, which both bind the peptide, exon 4 encodes the alpha3 domain, exon 5 encodes the transmembrane region and exons 6 and 7 encode the cytoplasmic tail. Polymorphisms within exon 2 and exon 3 are responsible for the peptide binding specificity of each class one molecule. Typing for these polymorphisms is routinely done for bone marrow and kidney transplantation. Hundreds of HLA-B alleles have been described.</p>
Form	20mM Tris, 150mM NaCl, pH8.0, containing 1mM EDTA, 1mM DTT, 0.01% SKL, 5% Trehalose and Proclin300.

 Tel: 1-631-559-9269 1-516-512-3133

 Email: info@creative-biomart.com  Fax: 1-631-938-8127

 45-1 Ramsey Road, Shirley, NY 11967, USA

Molecular Mass	36.7kDa
Endotoxin	<1.0EU per 1ug (determined by the LAL method)
Purity	> 95%
Applications	Positive Control; Immunogen; SDS-PAGE; WB. If bio-activity of the protein is needed, please check active protein
Stability	The thermal stability is described by the loss rate. The loss rate was determined by accelerated thermal degradation test, that is, incubate the protein at 37 centigrade for 48h, and no obvious degradation and precipitation were observed. The loss rate is less than 5% within the expiration date under appropriate storage condition.
Storage	Avoid repeated freeze/thaw cycles. Store at 2-8 centigrade for one month. Aliquot and store at -80 centigrade for 12 months.
Reconstitution	Reconstitute in 20mM Tris, 150mM NaCl (pH8.0) to a concentration of 0.1-1.0 mg/mL. Do not vortex.

GENE INFORMATION

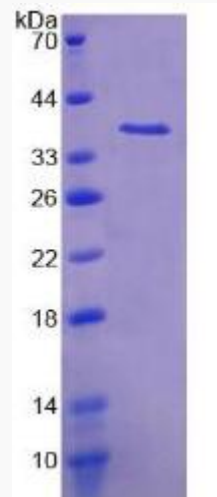
Gene Name	HLA-B major histocompatibility complex, class I, B [Homo sapiens]
Official Symbol	HLA-B
Synonyms	HLA-B; major histocompatibility complex, class I, B; ankylosing spondylitis , AS; lymphocyte antigen; MHC class I antigen SHCHA; MHC Class I HLA heavy chain; MHC class I antigen GN00104; leukocyte antigen class I-B; MHC HLA-B cell surface glycoprotein; MHC HLA-B transmembrane glycoprotein; MHC class I antigen HLA-B heavy chain; HLA class I histocompatibility antigen, B alpha chain; AS; HLAB;

 Tel: 1-631-559-9269 1-516-512-3133

 Email: info@creative-biomart.com  Fax: 1-631-938-8127

 45-1 Ramsey Road, Shirley, NY 11967, USA

SPDA1; MGC111087;

Gene ID 3106**mRNA Refseq** NM_005514**Protein Refseq** NP_005505**UniProt ID** P01889 Tel: 1-631-559-9269 1-516-512-3133 Email: info@creative-biomart.com  Fax: 1-631-938-8127 45-1 Ramsey Road, Shirley, NY 11967, USA