

Recombinant Human HLA-B protein, His-tagged

Cat. No. HLA-B-424H Lot. No. (See product label)

SPECIFICATION

Product Overview	Recombinant Human HLA-B protein(P01889)(25-309aa), fused with N-terminal His tag, was expressed in E.coli.
Species	Human
Source	E.coli
ProteinLength	25-309aa
Form	If the delivery form is liquid, the default storage buffer is Tris/PBS-based buffer, 5%-50% glycerol. If the delivery form is lyophilized powder, the buffer before lyophilization is Tris/PBS-based buffer, 6% Trehalose, pH 8.0.
Molecular Mass	38.9 kDa
Purity	Greater than 85% as determined by SDS-PAGE.
Storage	Store at -20°C/-80°C upon receipt, aliquoting is necessary for mutiple use. Avoid repeated freeze-thaw cycles.
Reconstitution	We recommend that this vial be briefly centrifuged prior to opening to bring the contents to the bottom. Please reconstitute protein in deionized sterile water to a concentration of 0.1-1.0 mg/mL. We recommend to add 5-50% of glycerol (final concentration) and aliquot for long-term storage at -20°C/-80°C.

 Tel: 1-631-559-9269 1-516-512-3133

 Email: info@creative-biomart.com  Fax: 1-631-938-8127

 45-1 Ramsey Road, Shirley, NY 11967, USA

AA Sequence

GSHSMRYFYTSVSRPGRGEPFRFISVGYVDDTQFVRFSDAASPREEPRAPWIEQE
 GPEYWDRNTQIYKAQAQTDRESLRNLRGYYNQSEAGSHTLQSMYGCDVGPDRLL
 RGHDQYAYDGKDYIALNEDLRSWTAADTAAQITQRKWEAAREAEQRRAYLEGEKV
 EWLRRYLENGKDKLERADPPKTHVTHHPISDHEATLRCWALGFYPAEITLTWQRDG
 EDQTQDTELVETRPAGDRTFQKWAAVVPSGEEQRYTCHVQHEGLPKPLTLRWEV
 SSQSTVPIV

GENE INFORMATION
Gene Name

HLA-B major histocompatibility complex, class I, B [Homo sapiens]

Official Symbol

HLA-B

Synonyms

HLA-B; major histocompatibility complex, class I, B; ankylosing spondylitis , AS;
 lymphocyte antigen; MHC class I antigen SHCHA; MHC Class I HLA heavy chain;
 MHC class I antigen GN00104; leukocyte antigen class I-B; MHC HLA-B cell surface
 glycoprotein; MHC HLA-B transmembrane glycoprotein; MHC class I antigen HLA-B
 heavy chain; HLA class I histocompatibility antigen, B alpha chain; AS; HLAB;
 SPDA1; MGC111087;

Gene ID

3106

mRNA Refseq

NM_005514

Protein Refseq

NP_005505

UniProt ID

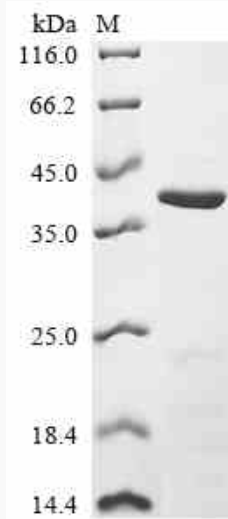
P01889

 Tel: 1-631-559-9269 1-516-512-3133

 Email: info@creative-biomart.com  Fax: 1-631-938-8127

 45-1 Ramsey Road, Shirley, NY 11967, USA

SDS-PAGE



 Tel: 1-631-559-9269 1-516-512-3133

 Email: info@creative-biomart.com  Fax: 1-631-938-8127

 45-1 Ramsey Road, Shirley, NY 11967, USA