

Recombinant Human HLA-B protein, His-tagged

Cat. No. HLA-B-5293H Lot. No. (See product label)

SPECIFICATION

Product Overview	Recombinant Human HLA-B protein(Q96DW9)(25-308aa), fused to N-terminal His tag, was expressed in E. coli.
Species	Human
Source	E.coli
ProteinLength	25-308aa
Form	If the delivery form is liquid, the default storage buffer is Tris/PBS-based buffer, 5%-50% glycerol. If the delivery form is lyophilized powder, the buffer before lyophilization is Tris/PBS-based buffer, 6% Trehalose, pH 8.0.
Molecular Mass	36.8 kDa
Purity	Greater than 90% as determined by SDS-PAGE.
Storage	Store at -20°C/-80°C upon receipt, aliquoting is necessary for multiple use. Avoid repeated freeze-thaw cycles.
Reconstitution	Please reconstitute protein in deionized sterile water to a concentration of 0.1-1.0 mg/mL. We recommend to add 5-50% of glycerol (final concentration) and aliquot for long-term storage at -20°C/-80°C. Our default final concentration of glycerol is 50%.

 Tel: 1-631-559-9269 1-516-512-3133

 Email: info@creative-biomart.com  Fax: 1-631-938-8127

 45-1 Ramsey Road, Shirley, NY 11967, USA

GENE INFORMATION

Gene Name HLA-B major histocompatibility complex, class I, B [Homo sapiens]

Official Symbol HLA-B

Synonyms HLA-B; major histocompatibility complex, class I, B; ankylosing spondylitis , AS; lymphocyte antigen; MHC class I antigen SHCHA; MHC Class I HLA heavy chain; MHC class I antigen GN00104; leukocyte antigen class I-B; MHC HLA-B cell surface glycoprotein; MHC HLA-B transmembrane glycoprotein; MHC class I antigen HLA-B heavy chain; HLA class I histocompatibility antigen, B alpha chain; AS; HLAB; SPDA1; MGC111087;

Gene ID 3106

mRNA Refseq NM_005514

Protein Refseq NP_005505

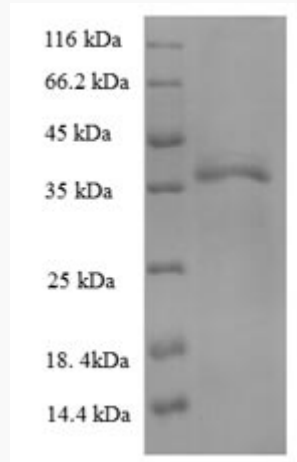
UniProt ID P01889

 Tel: 1-631-559-9269 1-516-512-3133

 Email: info@creative-biomart.com  Fax: 1-631-938-8127

 45-1 Ramsey Road, Shirley, NY 11967, USA

SDS-PAGE



 Tel: 1-631-559-9269 1-516-512-3133

 Email: info@creative-biomart.com  Fax: 1-631-938-8127

 45-1 Ramsey Road, Shirley, NY 11967, USA