

Recombinant Human HLA-B protein, His-tagged

Cat. No. HLA-B-8392H Lot. No. (See product label)

SPECIFICATION

Product Overview	Recombinant Human HLA-B protein(NP_005505.2), fused to His-tag, was expressed in HEK293.
Species	Human
Source	HEK293
ProteinLength	25-309 aa
Description	<p>HLA-B belongs to the HLA class I heavy chain paralogues. This class I molecule is a heterodimer consisting of a heavy chain and a light chain (beta-2 microglobulin). The heavy chain is anchored in the membrane. Class I molecules play a central role in the immune system by presenting peptides derived from the endoplasmic reticulum lumen. They are expressed in nearly all cells. The heavy chain is approximately 45 kDa and its gene contains 8 exons. Exon 1 encodes the leader peptide, exon 2 and 3 encode the alpha1 and alpha2 domains, which both bind the peptide, exon 4 encodes the alpha3 domain, exon 5 encodes the transmembrane region and exons 6 and 7 encode the cytoplasmic tail. Polymorphisms within exon 2 and exon 3 are responsible for the peptide binding specificity of each class one molecule. Typing for these polymorphisms is routinely done for bone marrow and kidney transplantation. Hundreds of HLA-B alleles have been described.</p>
Form	Supplied as a 0.2 µm filtered solution in PBS, pH 7.4.
Molecular Mass	The protein has a calculated MW of 33.6 kDa.

 Tel: 1-631-559-9269 1-516-512-3133

 Email: info@creative-biomart.com  Fax: 1-631-938-8127

 45-1 Ramsey Road, Shirley, NY 11967, USA



AA Sequence
HHHHHHGSHSMRYFYTSVSRPGRGEPFISVGYVDDTQFVRFSDAASPREEPRAPWIEQEGPEYWRNTQIYKAQAQTDRESLRNLRGYYNQSEAGSHTLQSMYGCVDVGPDRLLRGRHDQYAYDGKDIALNEDLRSWTAADTAAQITQRKWEAAREAEQRRLAYLEGECVEWLRRYLENGKDKLERADPPKTHVTHHPISDHEATLRCWALGFYPAEITLTWQRDGEDQTQDTELVETRPAGDRTFQKWAAVVPSGEEQRYTCHVQHEGLPKPLTLRWEPSQSTVPI

Purity >75%, by SDS-PAGE

Storage Store it under sterile conditions at -20 to -80°C. It is recommended that the protein be aliquoted for optimal storage. Avoid repeated freeze-thaw cycles.

Concentration 0.5 mg/ml

GENE INFORMATION

Gene Name HLA-B major histocompatibility complex, class I, B [Homo sapiens (human)]

Official Symbol HLA-B

Synonyms AS; HLAB; B-4901

Gene ID 3106

mRNA Refseq NM_005514.8

Protein Refseq NP_005505.2

MIM 142830

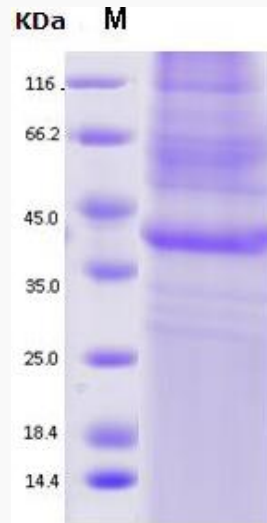
UniProt ID P01889

Tel: 1-631-559-9269 1-516-512-3133

Email: info@creative-biomart.com Fax: 1-631-938-8127

45-1 Ramsey Road, Shirley, NY 11967, USA

SDS-PAGE of HLA-B-8392H



 Tel: 1-631-559-9269 1-516-512-3133

 Email: info@creative-biomart.com  Fax: 1-631-938-8127

 45-1 Ramsey Road, Shirley, NY 11967, USA