

## Recombinant Human HLA-DQA1 Protein, GST-tagged

Cat. No. HLA-DQA1-4844H Lot. No. (See product label)

### SPECIFICATION

<b>Product Overview</b>	Human HLA-DQA1 partial ORF ( NP_002113.2, 24 a.a. - 110 a.a.) recombinant protein with GST-tag at N-terminal.
<b>Species</b>	Human
<b>Source</b>	Wheat Germ
<b>ProteinLength</b>	24-110 a.a.
<b>Description</b>	<p>HLA-DQA1 belongs to the HLA class II alpha chain paralogues. The class II molecule is a heterodimer consisting of an alpha (DQA) and a beta chain (DQB), both anchored in the membrane. It plays a central role in the immune system by presenting peptides derived from extracellular proteins. Class II molecules are expressed in antigen presenting cells (APC: B Lymphocytes, dendritic cells, macrophages). The alpha chain is approximately 33-35 kDa. It is encoded by 5 exons; exon 1 encodes the leader peptide, exons 2 and 3 encode the two extracellular domains, and exon 4 encodes the transmembrane domain and the cytoplasmic tail. Within the DQ molecule both the alpha chain and the beta chain contain the polymorphisms specifying the peptide binding specificities, resulting in up to four different molecules. Typing for these polymorphisms is routinely done for bone marrow transplantation. [provided by RefSeq]</p>
<b>Molecular Mass</b>	35.31 kDa
<b>AA Sequence</b>	EDIVADHVASCGVNLYQFYGPSGQYTHEFDGDEEFYVDLERKETAWRWPEFSKFG

 Tel: 1-631-559-9269 1-516-512-3133

 Email: [info@creative-biomart.com](mailto:info@creative-biomart.com)  Fax: 1-631-938-8127

 45-1 Ramsey Road, Shirley, NY 11967, USA

GFDPQGALRNMAVAKHNLNIMIKRYNSTAATN

**Applications**

Enzyme-linked Immunoabsorbent Assay  
 Western Blot (Recombinant protein)  
 Antibody Production  
 Protein Array

**Notes**

Best use within three months from the date of receipt of this protein.

**Storage**

Store at -8 centigrade. Aliquot to avoid repeated freezing and thawing.

**Storage Buffer**

50 mM Tris-HCl, 10 mM reduced Glutathione, pH=8.0 in the elution buffer.

## GENE INFORMATION

**Gene Name**

[HLA-DQA1 major histocompatibility complex, class II, DQ alpha 1 \[ Homo sapiens \]](#)

**Official Symbol**

[HLA-DQA1](#)

**Synonyms**

HLA-DQA1; major histocompatibility complex, class II, DQ alpha 1; HLA DQA; HLA class II histocompatibility antigen, DQ alpha 1 chain; CELIAC1; HLA-DCA; DC-alpha; DC-1 alpha chain; MHC HLA-DQ alpha; MHC class II DQA1; MHC class II antigen; leucocyte antigen DQA1; MHC class II HLA-DQ-alpha-1; leucocyte antigen alpha chain; MHC class II surface glycoprotein; MHC class II HLA-D alpha glycoprotein; HLA class II histocompatibility antigen, DQ(W3) alpha chain; CD; GSE; DQ-A1; HLA-DQA; FLJ27088; FLJ27328; MGC149527;

**Gene ID**

[3117](#)

**mRNA Refseq**

[NM\\_002122](#)

 Tel: 1-631-559-9269 1-516-512-3133

 Email: [info@creative-biomart.com](mailto:info@creative-biomart.com)  Fax: 1-631-938-8127

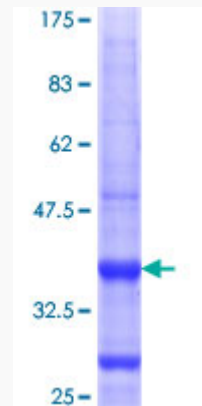
 45-1 Ramsey Road, Shirley, NY 11967, USA

**Protein Refseq** NP\_002113

**MIM** 146880

**UniProt ID** P01909

**Quality Control  
Testing**



12.5% SDS-PAGE Stained with Coomassie Blue.

 Tel: 1-631-559-9269 1-516-512-3133

 Email: [info@creative-biomart.com](mailto:info@creative-biomart.com)  Fax: 1-631-938-8127

 45-1 Ramsey Road, Shirley, NY 11967, USA