

Recombinant Human HLA-DQA1 Protein, Myc/DDK-tagged, C13 and N15-labeled

Cat. No. HLA-DQA1-5284H **Lot. No.** (See product label)

SPECIFICATION

Product Overview	HLA MS Standard C13 and N15-labeled recombinant protein (NP_002113) with a C-terminal MYC/DDK tag, was expressed in HEK293 cells.
Species	Human
Source	HEK293
Description	<p>HLA-DQA1 belongs to the HLA class II alpha chain paralogues. The class II molecule is a heterodimer consisting of an alpha (DQA) and a beta chain (DQB), both anchored in the membrane. It plays a central role in the immune system by presenting peptides derived from extracellular proteins. Class II molecules are expressed in antigen presenting cells (APC: B Lymphocytes, dendritic cells, macrophages). The alpha chain is approximately 33-35 kDa. It is encoded by 5 exons; exon 1 encodes the leader peptide, exons 2 and 3 encode the two extracellular domains, and exon 4 encodes the transmembrane domain and the cytoplasmic tail. Within the DQ molecule both the alpha chain and the beta chain contain the polymorphisms specifying the peptide binding specificities, resulting in up to four different molecules. Typing for these polymorphisms is routinely done for bone marrow transplantation.</p>
Molecular Mass	27.8 kDa
AA Sequence	MILNKALLLGALALTTVMSPCGGEDIVADHVASCGVNLYQFYGPSGQFTHEFDGDE QFYVDLEKKETAWRWPEFSKFGGFDPPQALRNMAVAKHNLNIMIKRYNSTAATNEV

 Tel: 1-631-559-9269 1-516-512-3133

 Email: info@creative-biomart.com  Fax: 1-631-938-8127

 45-1 Ramsey Road, Shirley, NY 11967, USA

PEVTVFSKSPVTLGQPNTLICLDNIFPPVVNITWLSNGHAVTEGVSETSFLSKSDHSF
 FKISYLTFLPSADEIYDCKVEHWGLDQPLLKHWEPEIPAPMSELTETVVCALGLSVGL
 VGIVVGTVFIIQGLRSVGASRHQGPLTRTRPLEQKLISEEDLAANDILDYKDDDDKV

Purity > 80% as determined by SDS-PAGE and Coomassie blue staining

Stability Stable for 3 months from receipt of products under proper storage and handling conditions.

Storage Store at -80 centigrade. Avoid repeated freeze-thaw cycles.

Concentration 50 µg/mL as determined by BCA

Storage Buffer 100 mM glycine, 25 mM Tris-HCl, pH 7.3.

GENE INFORMATION

Gene Name HLA-DQA1 major histocompatibility complex, class II, DQ alpha 1 [Homo sapiens (human)]

Official Symbol HLA-DQA1

Synonyms HLA-DQA1; major histocompatibility complex, class II, DQ alpha 1; HLA DQA; HLA class II histocompatibility antigen, DQ alpha 1 chain; CELIAC1; HLA-DCA; DC-alpha; DC-1 alpha chain; MHC HLA-DQ alpha; MHC class II DQA1; MHC class II antigen; leucocyte antigen DQA1; MHC class II HLA-DQ-alpha-1; leukocyte antigen alpha chain; MHC class II surface glycoprotein; MHC class II HLA-D alpha glycoprotein; HLA class II histocompatibility antigen, DQ(W3) alpha chain; CD; GSE; DQ-A1; HLA-DQA; FLJ27088; FLJ27328; MGC149527;

Gene ID 3117

 Tel: 1-631-559-9269 1-516-512-3133

 Email: info@creative-biomart.com  Fax: 1-631-938-8127

 45-1 Ramsey Road, Shirley, NY 11967, USA

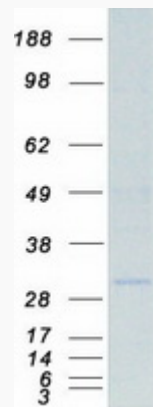
mRNA Refseq [NM_002122](#)

Protein Refseq [NP_002113](#)

MIM [146880](#)

UniProt ID [P01909](#)

SDS-PAGE



 Tel: 1-631-559-9269 1-516-512-3133

 Email: info@creative-biomart.com  Fax: 1-631-938-8127

 45-1 Ramsey Road, Shirley, NY 11967, USA