

## Recombinant Human HLA-DQA1 protein, His-tagged

Cat. No. HLA-DQA1-5291H Lot. No. (See product label)

### SPECIFICATION

<b>Product Overview</b>	Recombinant Human HLA-DQA1 protein(P01909)(24-213aa), fused to N-terminal His tag, was expressed in E. coli.
<b>Species</b>	Human
<b>Source</b>	E.coli
<b>ProteinLength</b>	24-213aa
<b>Form</b>	If the delivery form is liquid, the default storage buffer is Tris/PBS-based buffer, 5%-50% glycerol. If the delivery form is lyophilized powder, the buffer before lyophilization is Tris/PBS-based buffer, 6% Trehalose, pH 8.0.
<b>Molecular Mass</b>	25.4 kDa
<b>Purity</b>	Greater than 90% as determined by SDS-PAGE.
<b>Storage</b>	Store at -20°C/-80°C upon receipt, aliquoting is necessary for multiple use. Avoid repeated freeze-thaw cycles.
<b>Reconstitution</b>	Please reconstitute protein in deionized sterile water to a concentration of 0.1-1.0 mg/mL. We recommend to add 5-50% of glycerol (final concentration) and aliquot for long-term storage at -20°C/-80°C. Our default final concentration of glycerol is 50%.

 Tel: 1-631-559-9269 1-516-512-3133

 Email: [info@creative-biomart.com](mailto:info@creative-biomart.com)  Fax: 1-631-938-8127

 45-1 Ramsey Road, Shirley, NY 11967, USA

## GENE INFORMATION

**Gene Name** HLA-DQA1 major histocompatibility complex, class II, DQ alpha 1 [ Homo sapiens ]

**Official Symbol** HLA-DQA1

**Synonyms** HLA-DQA1; major histocompatibility complex, class II, DQ alpha 1; HLA DQA; HLA class II histocompatibility antigen, DQ alpha 1 chain; CELIAC1; HLA-DCA; DC-alpha; DC-1 alpha chain; MHC HLA-DQ alpha; MHC class II DQA1; MHC class II antigen; leucocyte antigen DQA1; MHC class II HLA-DQ-alpha-1; leukocyte antigen alpha chain; MHC class II surface glycoprotein; MHC class II HLA-D alpha glycoprotein; HLA class II histocompatibility antigen, DQ(W3) alpha chain; CD; GSE; DQ-A1; HLA-DQA; FLJ27088; FLJ27328; MGC149527;

**Gene ID** 3117

**mRNA Refseq** NM\_002122

**Protein Refseq** NP\_002113

**MIM** 146880

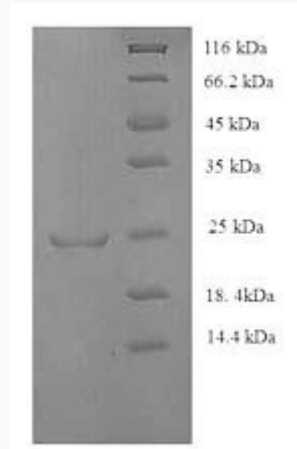
**UniProt ID** P01909

 Tel: 1-631-559-9269 1-516-512-3133

 Email: [info@creative-biomart.com](mailto:info@creative-biomart.com)  Fax: 1-631-938-8127

 45-1 Ramsey Road, Shirley, NY 11967, USA

**SDS-PAGE**



 Tel: 1-631-559-9269 1-516-512-3133

 Email: [info@creative-biomart.com](mailto:info@creative-biomart.com)  Fax: 1-631-938-8127

 45-1 Ramsey Road, Shirley, NY 11967, USA