

# Recombinant Full Length Human HLA-DQA1 Protein, C-Flag-tagged

**Cat. No.** HLA-DQA1-973HFL    **Lot. No.** (See product label)

## SPECIFICATION

<b>Product Overview</b>	Recombinant Full Length Human HLA-DQA1 Protein, fused to Flag-tag at C-terminus, was expressed in Mammalian cells.
<b>Species</b>	Human
<b>Source</b>	Mammalian Cells
<b>Description</b>	<p>HLA-DQA1 belongs to the HLA class II alpha chain paralogues. The class II molecule is a heterodimer consisting of an alpha (DQA) and a beta chain (DQB), both anchored in the membrane. It plays a central role in the immune system by presenting peptides derived from extracellular proteins. Class II molecules are expressed in antigen presenting cells (APC: B Lymphocytes, dendritic cells, macrophages). The alpha chain is approximately 33-35 kDa. It is encoded by 5 exons; exon 1 encodes the leader peptide, exons 2 and 3 encode the two extracellular domains, and exon 4 encodes the transmembrane domain and the cytoplasmic tail. Within the DQ molecule both the alpha chain and the beta chain contain the polymorphisms specifying the peptide binding specificities, resulting in up to four different molecules. Typing for these polymorphisms is routinely done for bone marrow transplantation.</p>
<b>Form</b>	25 mM Tris HCl, pH 7.3, 100 mM glycine, 10% glycerol.
<b>Molecular Mass</b>	27.8 kDa
<b>AA Sequence</b>	MILNKALLLGALALTTVMSPCGGEDIVADHVASCGVNLYQFYGPSGQFTHEFDGDE

 Tel: 1-631-559-9269    1-516-512-3133

 Email: [info@creative-biomart.com](mailto:info@creative-biomart.com)     Fax: 1-631-938-8127

 45-1 Ramsey Road, Shirley, NY 11967, USA



QFYVDLEKKETAWR WPEFSKFGGFDPQGALRNMAVAKHNLNIMIKRYNSTAATNE  
 VPEVTVFSKSPVTLGQPNTLICLDNIFPP VVNITWLSNGHAVTEGVSETSFLSKSDHS  
 FFKISYLTFLPSADEIYDCKVEHWGLDQPLLKHWEPEIPAP  
 MSELTETVVCALGLSVGLVGVVGTVFIIQGLRSVGASRHQGPLTRTRPLEQKLISEE  
 DLAANDILDYKDDDDKV

**Purity** > 80% as determined by SDS-PAGE and Coomassie blue staining.

**Stability** Stable for 12 months from the date of receipt of the product under proper storage and handling conditions. Avoid repeated freeze-thaw cycles.

**Storage** Store at -80 centigrade.

**Concentration** >50 ug/mL as determined by microplate BCA method.

**Preparation** Recombinant protein was captured through anti-DDK affinity column followed by conventional chromatography steps.

**Protein Families** Transmembrane

**Protein Pathways** Allograft rejection, Antigen processing and presentation, Asthma, Autoimmune thyroid disease, Cell adhesion molecules (CAMs), Graft-versus-host disease, Systemic lupus erythematosus, Type I diabetes mellitus, Viral myocarditis

**Full Length** Full L.

## GENE INFORMATION

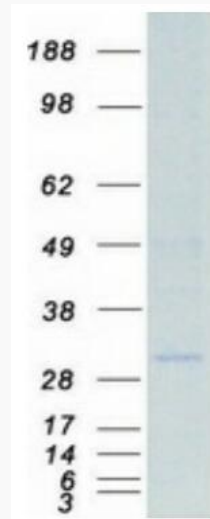
**Gene Name** HLA-DQA1 major histocompatibility complex, class II, DQ alpha 1 [ Homo sapiens (human) ]

Tel: 1-631-559-9269 1-516-512-3133

Email: [info@creative-biomart.com](mailto:info@creative-biomart.com) Fax: 1-631-938-8127

45-1 Ramsey Road, Shirley, NY 11967, USA

<b>Official Symbol</b>	HLA-DQA1
<b>Synonyms</b>	DQA1; DQ-A1; CELIAC1; HLA-DQA; HLA-DQB1; HLA-DQA1*
<b>Gene ID</b>	3117
<b>mRNA Refseq</b>	NM_002122.5
<b>Protein Refseq</b>	NP_002113.2
<b>MIM</b>	146880
<b>UniProt ID</b>	P01909



Coomassie blue staining of purified HLA-DQA1 protein.

 Tel: 1-631-559-9269 1-516-512-3133

 Email: [info@creative-biomart.com](mailto:info@creative-biomart.com)  Fax: 1-631-938-8127

 45-1 Ramsey Road, Shirley, NY 11967, USA