

HLA-DR Antibody-coupled magnetic MicroBeads

Cat. No. HLA-DR-03M Lot. No. (See product label)

SPECIFICATION

Species Human

Capacity for 1×10^9 total cells

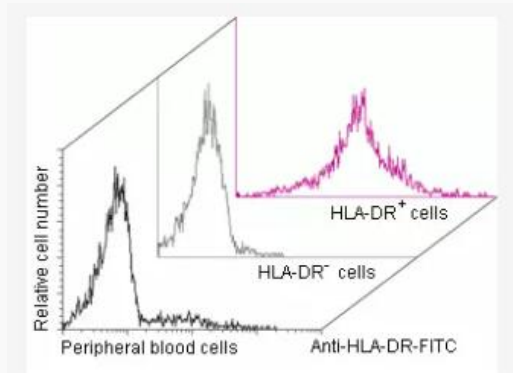
Background

The HLA-DR antigen is constitutively expressed on professional antigen-presenting cells (dendritic cells, B cells, monocytes/macrophages), and its expression is further up-regulated upon activation. On T cells, NK cells, hematopoietic precursor cells, and some epithelial cells the expression of HLA-DR is induced by cell activation.

Application

HLA-DR-positive cells are isolated, for example, for serological typing of HLA class II molecules or studies on antigen presentation.

Analysis



Separation of human PBMCs using Anti-HLA-DR MicroBeads and MiniMACS Separator with an MS Column. Cells are stained with Anti-HLA-DR-FITC.

Tel: 1-631-559-9269 1-516-512-3133

Email: info@creative-biomart.com Fax: 1-631-938-8127

45-1 Ramsey Road, Shirley, NY 11967, USA