

# Recombinant Human HLA-E protein, His-Avi-tagged, Biotinylated

**Cat. No.** HLA-E-039H    **Lot. No.** (See product label)

## SPECIFICATION

<b>Product Overview</b>	Biotinylated Recombinant Human HLA-E Complex Protein(P61769&P13747&VMAPRTLVL) is expressed from HEK293 with His and Avi tag at the C-terminal. It contains Gly25-Ile305(HLA-E),Ile21-Met119(B2M) and VMAPRTLVL peptide.
<b>Species</b>	Human
<b>Source</b>	HEK293
<b>ProteinLength</b>	It contains Gly25-Ile305(HLA-E),Ile21-Met119(B2M) and VMAPRTLVL peptide.
<b>Description</b>	HLA-E is a nonclassical member of the major histocompatibility complex class I gene locus. HLA-E protein shares a high level of homology with MHC Ia classical proteins: it has similar tertiary structure, associates with $\beta$ 2-microglobulin, and is able to present peptides to cytotoxic lymphocytes. The main function of HLA-E under normal conditions is to present peptides derived from the leader sequences of classical HLA class I proteins, thus serving for monitoring of expression of these molecules performed by cytotoxic lymphocytes.
<b>Form</b>	Supplied as 0.22um filtered solution in PBS (pH 7.4).
<b>Molecular Mass</b>	The protein has a predicted MW of 50.2 kDa. Due to glycosylation, the protein migrates to 52-60 kDa based on Tris-Bis PAGE result.

 Tel: 1-631-559-9269    1-516-512-3133

 Email: [info@creative-biomart.com](mailto:info@creative-biomart.com)     Fax: 1-631-938-8127

 45-1 Ramsey Road, Shirley, NY 11967, USA

<b>Endotoxin</b>	Less than 1EU per µg by the LAL method.
<b>Purity</b>	> 95% as determined by Tris-Bis PAGE > 95% as determined by SEC-HPLC
<b>Storage</b>	The product should be stored at -70°C. Please do not repeated freeze-thaw cycles.
<b>Reconstitution</b>	It is recommended that sterile water be added to the vial to prepare a stock solution of 0.2 ug/ul. Centrifuge the vial at 4°C before opening to recover the entire contents.
<b>Conjugation</b>	Biotin

## GENE INFORMATION

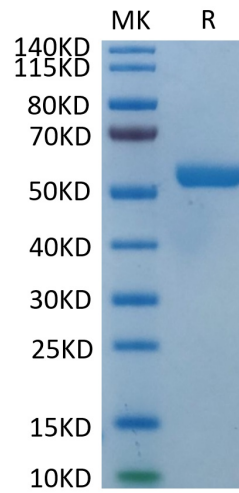
<b>Gene Name</b>	HLA-E major histocompatibility complex, class I, E [ Homo sapiens (human) ]
<b>Official Symbol</b>	HLA-E
<b>Synonyms</b>	HLA class I histocompatibility antigen, alpha chain E; HLAE;sHLA-E
<b>Gene ID</b>	3133
<b>mRNA Refseq</b>	NM_005516
<b>Protein Refseq</b>	NP_005507
<b>MIM</b>	143010
<b>UniProt ID</b>	P13747

 Tel: 1-631-559-9269 1-516-512-3133

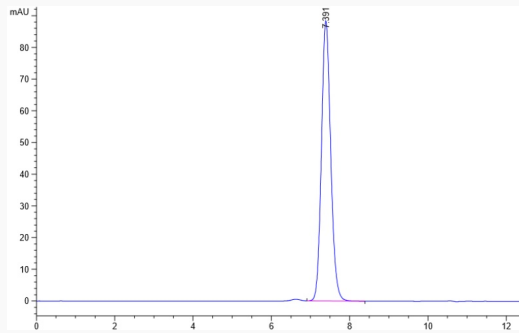
 Email: [info@creative-biomart.com](mailto:info@creative-biomart.com)  Fax: 1-631-938-8127

 45-1 Ramsey Road, Shirley, NY 11967, USA

**SDS-PAGE**



**HPLC**



 Tel: 1-631-559-9269 1-516-512-3133

 Email: [info@creative-biomart.com](mailto:info@creative-biomart.com)  Fax: 1-631-938-8127

 45-1 Ramsey Road, Shirley, NY 11967, USA