

Recombinant Human HLA-E complex Protein (tetramer), His-Avi-tagged, PE-Labeled

Cat. No. HLA-E-040HP Lot. No. (See product label)

SPECIFICATION

Product Overview	Recombinant PE-Labeled Human HLA-E*01:03 Tetramer Protein(P13747(HLA-E*01:03)&P61769(B2M)&VMAPRTLVL)(Gly25-Ile305(HLA-E*01:03),Ile21-Met119(B2M) and VMAPRTLVL peptide) is expressed from Expi293 with His tag and Avi tag at the C-terminal,tetramer is assembled by biotinylated monomer and streptavidin.
Species	Human
Source	HEK293
ProteinLength	Gly25-Ile305(HLA-E*01:03),Ile21-Met119(B2M) and VMAPRTLVL peptide
Form	Supplied as 0.22µm filtered solution in PBS (pH 7.4). Please dilute to the desired concentration according to the concentration of the solution shown on the product label.
Molecular Mass	The protein has a predicted MW of 258 kDa. Due to glycosylation, the protein migrates to 260-265 kDa under Non reducing (N) condition based on Tris-Bis PAGE result.
Endotoxin	Less than 1EU per µg by the LAL method.
Purity	> 95% as determined by Tris-Bis PAGE

 Tel: 1-631-559-9269 1-516-512-3133

 Email: info@creative-biomart.com  Fax: 1-631-938-8127

 45-1 Ramsey Road, Shirley, NY 11967, USA

Storage Valid for 12 months from date of receipt when stored at -80°C.
Recommend to aliquot the protein into smaller quantities for optimal storage. Please do not repeated freeze-thaw cycles.

Reconstitution It is recommended to reconstitute the lyophilized powder in sterile water to 100-200 ug/ml, and further dilute with other solvents. The dissolved protein can be stored at 4°C for 2-7 days and should be used up as soon as possible. If not in use for a short time, please store at -20°C.

GENE INFORMATION

Gene Name HLA-E major histocompatibility complex, class I, E [Homo sapiens]

Official Symbol HLA-E

Synonyms HLA-E; major histocompatibility complex, class I, E; HLA class I histocompatibility antigen, alpha chain E; MHC HLA-E alpha-1; lymphocyte antigen; MHC HLA-E alpha-2.1; MHC class I antigen E; HLA class I histocompatibility antigen, E alpha chain; MHC; QA1; EA1.2; EA2.1; HLA-6.2; DKFZp686P19218;

Gene ID 3133

mRNA Refseq NM_005516

Protein Refseq NP_005507

MIM 143010

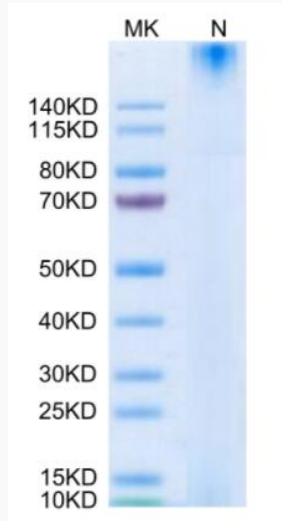
UniProt ID P13747

 Tel: 1-631-559-9269 1-516-512-3133

 Email: info@creative-biomart.com  Fax: 1-631-938-8127

 45-1 Ramsey Road, Shirley, NY 11967, USA

Tris-Bis PAGE



 Tel: 1-631-559-9269 1-516-512-3133

 Email: info@creative-biomart.com  Fax: 1-631-938-8127

 45-1 Ramsey Road, Shirley, NY 11967, USA