

Recombinant Full Length Human HLA-E Protein, C-Flag-tagged

Cat. No. HLA-E-268HFL **Lot. No.** (See product label)

SPECIFICATION

Product Overview	Recombinant Full Length Human HLA-E Protein, fused to Flag-tag at C-terminus, was expressed in Mammalian cells.
Species	Human
Source	Mammalian Cells
Description	HLA-E belongs to the HLA class I heavy chain paralogues. This class I molecule is a heterodimer consisting of a heavy chain and a light chain (beta-2 microglobulin). The heavy chain is anchored in the membrane. HLA-E binds a restricted subset of peptides derived from the leader peptides of other class I molecules. The heavy chain is approximately 45 kDa and its gene contains 8 exons. Exon one encodes the leader peptide, exons 2 and 3 encode the alpha1 and alpha2 domains, which both bind the peptide, exon 4 encodes the alpha3 domain, exon 5 encodes the transmembrane region, and exons 6 and 7 encode the cytoplasmic tail.
Form	25 mM Tris HCl, pH 7.3, 100 mM glycine, 10% glycerol.
Molecular Mass	37.8 kDa
AA Sequence	MVDGTLLELLSEALALTQTWAGSHSLKYFHTSVSRPGRGEPFRFISVGYVDDTQFVRF DNDAASPRMVPRA PWMEQEGSEYWDRETRSARDTAQIFRVNLRRTLGRYYNQSEA GSHTLQWMHGCELGPDGRFLRGYEQFAYD GKDYLTLELRLRSWTAVDTAAQISE QKSNDAEAEHQRAYLEDTCEVWLHKYLEKGGKETLLHLEPPKTHV THHPISDHEAT

 Tel: 1-631-559-9269 1-516-512-3133

 Email: info@creative-biomart.com  Fax: 1-631-938-8127

 45-1 Ramsey Road, Shirley, NY 11967, USA



LRCWALGFYPAEITLTWQQDGEGHTQDTELVETRPAGDGTFFQKWAAVVPSGEEQ
RYTC HVQHEGLPEPVTLRWKPASQPTIPIVGIIAGLVLLGSVVSGAVVAAVIWRKKSS
GGKGGSYSKAEWSDSA
QGSESHSLRTRPQLEQKLISEEDLAANDILDYKDDDDKV

Purity > 80% as determined by SDS-PAGE and Coomassie blue staining.

Stability Stable for 12 months from the date of receipt of the product under proper storage and handling conditions. Avoid repeated freeze-thaw cycles.

Storage Store at -80 centigrade.

Concentration >50 ug/mL as determined by microplate BCA method.

Preparation Recombinant protein was captured through anti-DDK affinity column followed by conventional chromatography steps.

Protein Families Transmembrane

Protein Pathways Allograft rejection, Antigen processing and presentation, Autoimmune thyroid disease, Cell adhesion molecules (CAMs), Endocytosis, Graft-versus-host disease, Natural killer cell mediated cytotoxicity, Type I diabetes mellitus, Viral myocarditis

Full Length Full L.

GENE INFORMATION

Gene Name HLA-E major histocompatibility complex, class I, E [Homo sapiens (human)]

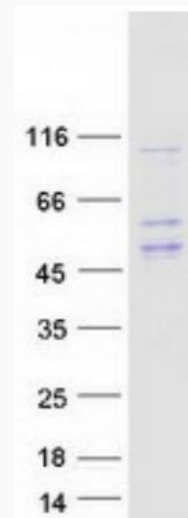
Official Symbol HLA-E

Tel: 1-631-559-9269 1-516-512-3133

Email: info@creative-biomart.com Fax: 1-631-938-8127

45-1 Ramsey Road, Shirley, NY 11967, USA

Synonyms	QA1; HLA-6.2
Gene ID	3133
mRNA Refseq	NM_005516.6
Protein Refseq	NP_005507.3
MIM	143010
UniProt ID	P13747



Coomassie blue staining of purified HLA-E protein.

 Tel: 1-631-559-9269 1-516-512-3133

 Email: info@creative-biomart.com  Fax: 1-631-938-8127

 45-1 Ramsey Road, Shirley, NY 11967, USA