

Recombinant Human HLA-G Protein

Cat. No. HLA-G-1241H Lot. No. (See product label)

SPECIFICATION

| | |
|-------------------------|---|
| Product Overview | Recombinant Human HLA-G Protein (25-338aa) was expressed in mammalian cells with N-terminal His-tag. |
| Species | Human |
| Source | HEK293 |
| Protein Length | 25-338 a.a. |
| Form | Tris-based buffer, 50% glycerol. |
| Molecular Mass | 39.6 kDa |
| AA Sequence | GSLSMRYFSAAVSRPGRGEPRIAMGYVDDTQFVRFSDSDSACPRMEPRAPWVEQ EGPEYWEETRNTKAHAQTDRMNLQTLRGYYNQSEASSHTLQWMIGCDLGS DGR LLRGYEQYAYDGKDY LALNEDLRSWTAADTAAQISKRKCEANVAEQRRAYLEGTC VEWLHRYLENGKEMLRADPPKTHVTHHPVFDYEATLRCWALGFYP AEIILTWQRD GEDQTQDVELVETRPAGDGT FQKWA AVVPSGEEQRYTCHVQHEGLPEPLMLRW KQSSLPTIPIMGIVAGLVVLA AVVTGAAVA AVLWRKKSSD |
| Purity | Greater than 90% as determined by SDS-PAGE. |
| Storage | The shelf life of liquid form is 6 months at -20 centigrade/-80 centigrade. The shelf life of lyophilized form is 12 months at -20 centigrade/-80 centigrade. |

 Tel: 1-631-559-9269 1-516-512-3133

 Email: info@creative-biomart.com  Fax: 1-631-938-8127

 45-1 Ramsey Road, Shirley, NY 11967, USA

GENE INFORMATION

Gene Name HLA-G major histocompatibility complex, class I, G [Homo sapiens]

Official Symbol HLA-G

Synonyms HLA-G; major histocompatibility complex, class I, G; HLA G histocompatibility antigen, class I, G; HLA class I histocompatibility antigen, alpha chain G; b2 microglobulin; HLA G antigen; HLA class I molecule; MHC class I antigen G; HLA-G histocompatibility antigen, class I, G; MHC-G

Gene ID 3135

mRNA Refseq NM_002127

Protein Refseq NP_002118

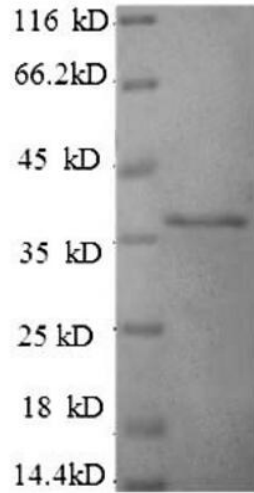
MIM 142871

UniProt ID P17693

 Tel: 1-631-559-9269 1-516-512-3133

 Email: info@creative-biomart.com  Fax: 1-631-938-8127

 45-1 Ramsey Road, Shirley, NY 11967, USA



 Tel: 1-631-559-9269 1-516-512-3133

 Email: info@creative-biomart.com  Fax: 1-631-938-8127

 45-1 Ramsey Road, Shirley, NY 11967, USA