

Recombinant Human HLA-G & B2M Protein, His-tagged

Cat. No. HLA-G-1242H Lot. No. (See product label)

SPECIFICATION

Product Overview	Recombinant Human HLA-G(P17693-1) & B2M(P61769) Protein (25-338aa), fused with N-terminal His tag, was expressed in HEK293.
Species	Human
Source	HEK293
Protein Length	25-338aa
Form	Lyophilized from 20mM Tris, pH8.0, 150mM NaCl, 0.01% DDM, 10% Trehalose.
Molecular Mass	The protein has a calculated MW of 40 kDa.
Endotoxin	<1EU/ug by LAL
Purity	>90% by SDS-PAGE
Storage	Store it under sterile conditions at -20 to -80°C. It is recommended that the protein be aliquoted for optimal storage. Avoid repeated freeze-thaw cycles.
Reconstitution	It is recommended that sterile water be added to the vial to prepare a stock solution of 0.06mg/ml. Centrifuge the vial at 4°C before opening to recover the entire contents.

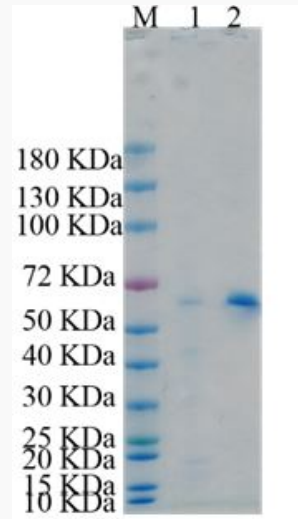
GENE INFORMATION

 Tel: 1-631-559-9269 1-516-512-3133

 Email: info@creative-biomart.com  Fax: 1-631-938-8127

 45-1 Ramsey Road, Shirley, NY 11967, USA

Gene Name	HLA-G major histocompatibility complex, class I, G [Homo sapiens (human)]
Official Symbol	HLA-G
Synonyms	MHC-G; HLA-G
Gene ID	3135
mRNA Refseq	NM_002127
Protein Refseq	NP_002118
MIM	142871
UniProt ID	P17693

SDS-PAGE


Tel: 1-631-559-9269 1-516-512-3133

Email: info@creative-biomart.com Fax: 1-631-938-8127

45-1 Ramsey Road, Shirley, NY 11967, USA