

Recombinant Full Length Human HLA-G Protein, C-Flag-tagged

Cat. No. HLA-G-1718HFL Lot. No. (See product label)

SPECIFICATION

Product Overview	Recombinant Full Length Human HLA-G Protein, fused to Flag-tag at C-terminus, was expressed in Mammalian cells.
Species	Human
Source	Mammalian Cells
Description	HLA-G belongs to the HLA class I heavy chain paralogues. This class I molecule is a heterodimer consisting of a heavy chain and a light chain (beta-2 microglobulin). The heavy chain is anchored in the membrane. HLA-G is expressed on fetal derived placental cells. The heavy chain is approximately 45 kDa and its gene contains 8 exons. Exon one encodes the leader peptide, exons 2 and 3 encode the alpha1 and alpha2 domain, which both bind the peptide, exon 4 encodes the alpha3 domain, exon 5 encodes the transmembrane region, and exon 6 encodes the cytoplasmic tail.
Form	25 mM Tris HCl, pH 7.3, 100 mM glycine, 10% glycerol.
Molecular Mass	38.3 kDa
AA Sequence	MVVMAPRTLFLLLSGALTLTETWAGSHSMRYFSAAVSRPSRGEPRFIAMGYVDDTQ FVRFSDSDSACPRME PRAPWVEREGPEYWEEETRNTKAHAQTDRMNLQTLRGYYN QSEASSHTLQWMIGCDLGS DGRLLRGYEQY AYDGKDY LALNEDLRSWTAADTAAQ ISKRKCEAANVAEQRRAYLEGTCVEWLHRYLENGKEM LQRADPPK THVTHHPVFD YEATLRCWALGFYPAEII LTWQRDGEDQTQDVELVETKPA GDGTFQKWA AVVVP SG

 Tel: 1-631-559-9269 1-516-512-3133

 Email: info@creative-biomart.com  Fax: 1-631-938-8127

 45-1 Ramsey Road, Shirley, NY 11967, USA

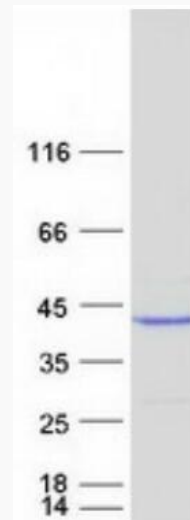
	EEQR YTCHVQHEGLPEPLMLRWKQSSLPTIPIMGIVAGLVVLAAVVTGAAVA AVLWRKKSS DTRTRPLEQKLISEEDLAANDILDYKDDDDKV
Purity	> 80% as determined by SDS-PAGE and Coomassie blue staining.
Stability	Stable for 12 months from the date of receipt of the product under proper storage and handling conditions. Avoid repeated freeze-thaw cycles.
Storage	Store at -80 centigrade.
Concentration	>50 ug/mL as determined by microplate BCA method.
Preparation	Recombinant protein was captured through anti-DDK affinity column followed by conventional chromatography steps.
Protein Families	Transmembrane
Protein Pathways	Allograft rejection, Antigen processing and presentation, Autoimmune thyroid disease, Cell adhesion molecules (CAMs), Endocytosis, Graft-versus-host disease, Natural killer cell mediated cytotoxicity, Type I diabetes mellitus, Viral myocarditis
Full Length	Full L.
GENE INFORMATION	
Gene Name	HLA-G major histocompatibility complex, class I, G [Homo sapiens (human)]
Official Symbol	HLA-G
Synonyms	MHC-G

 Tel: 1-631-559-9269 1-516-512-3133

 Email: info@creative-biomart.com  Fax: 1-631-938-8127

 45-1 Ramsey Road, Shirley, NY 11967, USA

Gene ID	3135
mRNA Refseq	NM_002127.6
Protein Refseq	NP_002118.1
MIM	142871
UniProt ID	P17693



Coomassie blue staining of purified HLA-G protein.

Tel: 1-631-559-9269 1-516-512-3133

Email: info@creative-biomart.com Fax: 1-631-938-8127

45-1 Ramsey Road, Shirley, NY 11967, USA