

Recombinant Human IFNA7 Protein, His tagged

Cat. No. HLA-G-21H Lot. No. (See product label)

SPECIFICATION

Product Overview	Recombinant human HLA-G, fused to His-tag at N-terminus, was expressed in E. coli and purified by using conventional chromatography techniques
Species	Human
Source	E.coli
ProteinLength	25-308 aa
Description	HLA-G, also known as HLA class I histocompatibility antigen, alpha chain G, belongs to the HLA class I heavy chain paralogues. This class I molecule is a heterodimer consisting of a heavy chain and a light chain (beta-2 microglobulin). The heavy chain is anchored in the membrane. HLA-G is expressed on fetal derived placental cells. HLA-G is a non-classical class-I HLA molecule associated with anti-inflammatory and immuno-modulatory properties which interacts with inhibitory receptors (ILT2/ILT4/KIR2DL4) present on various immune cells. It inhibits proliferation of B cells, T cells and natural killer cells; and also induces regulatory T cells.
Form	Liquid in Phosphate-Buffered Saline (pH 7.4) containing 20% glycerol
Molecular Mass	35.3 kDa
AASequence	< MGSSHHHHHHSSGLVPRGSHMGSHM> GSHSMRYFSAAVSRPGRGEPFIAMG YVDDTQFVRFSDSACPRMEPRAPWVEQEGPEYWEEETRNTKAHAQTD RMNLQT LRGYYNQSEASSHTLQWMIGCDLGSDGRLLRGYEQYAYDGKDYLALNEDLRSWTA

 Tel: 1-631-559-9269 1-516-512-3133

 Email: info@creative-biomart.com  Fax: 1-631-938-8127

 45-1 Ramsey Road, Shirley, NY 11967, USA

ADTAAQISKRKCEAANVAEQRRAYLEGTCVEWLHRYLENGKEMLQRADPPKTHVT
 HHPVFDYEATLRCWALGFYPAEIILTWQRDGEDQTQDVELVETRPAGDGTGFQKWA
 VVPSGEEQRYTCHVQHEGLPEPLMLRWKQSSLPTIPI

Purity > 90% by SDS-PAGE

Applications SDS-PAGE

Notes For research use only. This product is not intended or approved for human, diagnostics or veterinary use.

Storage Can be stored at +2 to +8 centigrade for 1 week. For long term storage, aliquot and store at -20 to -80 centigrade. Avoid repeated freezing and thawing cycles.

Concentration 0.25 mg/mL (determined by absorbance at 280nm)

GENE INFORMATION

Gene Name HLA-G major histocompatibility complex, class I, G [Homo sapiens (human)]

Official Symbol HLA-G

Synonyms HLA-G; major histocompatibility complex, class I, G; HLA G histocompatibility antigen, class I, G; HLA class I histocompatibility antigen, alpha chain G; b2 microglobulin; HLA G antigen; HLA class I molecule; MHC class I antigen G; HLA-G histocompatibility antigen, class I, G; MHC-G

Gene ID 3135

mRNA Refseq NM_002127

 Tel: 1-631-559-9269 1-516-512-3133

 Email: info@creative-biomart.com  Fax: 1-631-938-8127

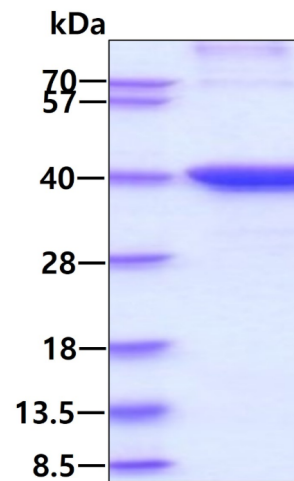
 45-1 Ramsey Road, Shirley, NY 11967, USA

Protein Refseq NP_002118

MIM 142871

UniProt ID P17693

SDS-PAGE



3 μ g by SDS-PAGE under reducing condition and visualized by coomassie blue stain.

 Tel: 1-631-559-9269 1-516-512-3133

 Email: info@creative-biomart.com  Fax: 1-631-938-8127

 45-1 Ramsey Road, Shirley, NY 11967, USA