

Recombinant Human HLA-G Protein, His-Avi-tagged

Cat. No. HLA-G-312H Lot. No. (See product label)

SPECIFICATION

Product Overview	Recombinant Human HLA-G Complex Protein(P61769&P17693) is expressed from Expi293 with His and Avi Tag at the C-terminal. It contains Gly25-Thr305 (HLA-G), Ile21-Met119 (B2M) and RIIPRHLQL peptide.
Species	Human
Source	HEK293
ProteinLength	It contains Gly25-Thr305 (HLA-G), Ile21-Met119 (B2M) and RIIPRHLQL peptide.
Form	Supplied as 0.22um filtered solution in PBS (pH 7.4).
Molecular Mass	The protein has a predicted MW of 50.5 kDa. Due to glycosylation, the protein migrates to 51-60 KDa based on Bis-Tris PAGE result.
Endotoxin	Less than 1EU per ug by the LAL method.
Purity	> 95% as determined by Bis-Tris PAGE; > 95% as determined by HPLC
Storage	The product should be stored at -70°C. Please do not repeated freeze-thaw cycles.
Reconstitution	It is recommended that sterile water be added to the vial to prepare a stock solution of 0.2 ug/ul. Centrifuge the vial at 4°C before opening to recover the entire contents.

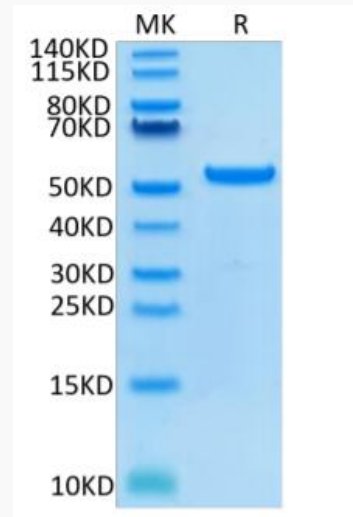
GENE INFORMATION

 Tel: 1-631-559-9269 1-516-512-3133

 Email: info@creative-biomart.com  Fax: 1-631-938-8127

 45-1 Ramsey Road, Shirley, NY 11967, USA

Gene Name	HLA-G major histocompatibility complex, class I, G [Homo sapiens]
Official Symbol	HLA-G
Synonyms	HLA class I histocompatibility antigen, alpha chain G; sHLA-G; HLAG; HLA-G; B2M
Gene ID	3135
mRNA Refseq	NM_002127
Protein Refseq	NP_002118
MIM	142871
UniProt ID	P17693

SDS-PAGE


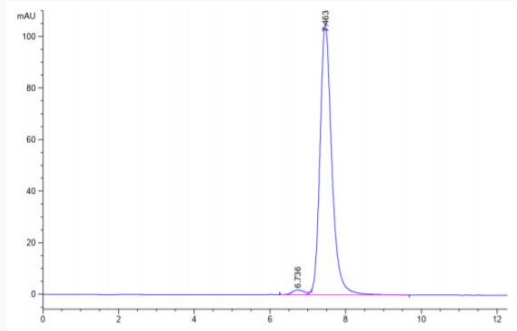
Tel: 1-631-559-9269 1-516-512-3133

Email: info@creative-biomart.com Fax: 1-631-938-8127

45-1 Ramsey Road, Shirley, NY 11967, USA



SEC-HPLC



Tel: 1-631-559-9269 1-516-512-3133

Email: info@creative-biomart.com Fax: 1-631-938-8127

45-1 Ramsey Road, Shirley, NY 11967, USA