

Recombinant Human HLA-G protein(Gly25-Thr305(C66S)), His-Avi-tagged

Cat. No. HLA-G-502H **Lot. No.** (See product label)

SPECIFICATION

Product Overview	Recombinant Human HLA-G protein(Gly25-Thr305(C66S))(P17693-1) is expressed from E.coli with His tag and Avi tag at the C-Terminus.
Species	Human
Source	E.coli
ProteinLength	Gly25-Thr305(C66S)
Form	Supplied as 0.22µm filtered solution in 20mM Tris, 500mM NaCl, 20% Glycerol (pH 8.0).
Bio-activity	Immobilized Human HLA-G Free Heavy Chain, His Tag at 2µg/ml (100µl/Well) on the. Dose response curve for Anti-HLA-G Antibody, hFc Tag with the EC50 of 29.0ng/ml determined by ELISA.
Molecular Mass	The protein has a predicted MW of 35.5 kDa. The protein migrates to 36-40 kDa based on Tris-Bis PAGE result.
Endotoxin	Less than 1EU per µg by the LAL method.
Purity	> 95% as determined by Tris-Bis PAGE
Storage	Valid for 12 months from date of receipt when stored at -80°C.

 Tel: 1-631-559-9269 1-516-512-3133

 Email: info@creative-biomart.com  Fax: 1-631-938-8127

 45-1 Ramsey Road, Shirley, NY 11967, USA

Recommend to aliquot the protein into smaller quantities for optimal storage. Please minimize freeze-thaw cycles.

Reconstitution

It is recommended that sterile water be added to the vial to prepare a stock solution of 0.2 ug/ul. Centrifuge the vial at 4°C before opening to recover the entire contents.

GENE INFORMATION

Gene Name

HLA-G major histocompatibility complex, class I, G [Homo sapiens]

Official Symbol

HLA-G

Synonyms

HLA-G; major histocompatibility complex, class I, G; HLA G histocompatibility antigen, class I, G; HLA class I histocompatibility antigen, alpha chain G; b2 microglobulin; HLA G antigen; HLA class I molecule; MHC class I antigen G; HLA-G histocompatibility antigen, class I, G; MHC-G;

Gene ID

3135

mRNA Refseq

NM_002127

Protein Refseq

NP_002118

MIM

142871

UniProt ID

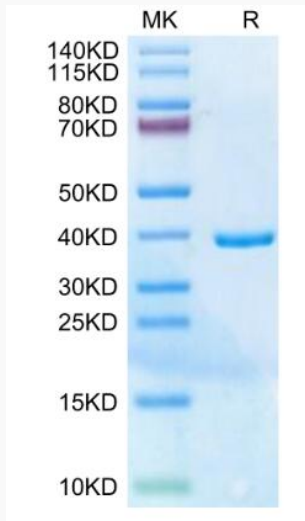
P17693

 Tel: 1-631-559-9269 1-516-512-3133

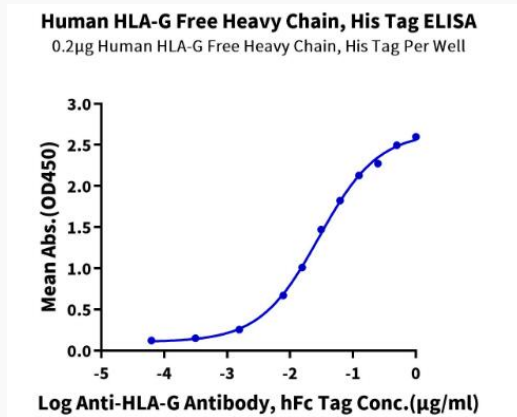
 Email: info@creative-biomart.com  Fax: 1-631-938-8127

 45-1 Ramsey Road, Shirley, NY 11967, USA

Tris-Bis PAGE



ELISA Data



Tel: 1-631-559-9269 1-516-512-3133

Email: info@creative-biomart.com Fax: 1-631-938-8127

45-1 Ramsey Road, Shirley, NY 11967, USA