

## Recombinant Cynomolgus HLA-G protein, His-Avi-tagged

Cat. No. HLA-G-503C Lot. No. (See product label)

### SPECIFICATION

<b>Product Overview</b>	Recombinant Cynomolgus HLA-G Protein(E0WKX9(HLA-G)&Q8SPW0(B2M)&RIIPRHLQL)(Gly25-Thr305(HLA-G),Ile21-Met119(B2M) and RIIPRHLQL peptide) is expressed from Expi293 with His tag and Avi tag at the C-terminal.
<b>Species</b>	Cynomolgus
<b>Source</b>	HEK293
<b>ProteinLength</b>	Gly25-Thr305(HLA-G),Ile21-Met119(B2M) and RIIPRHLQL peptide
<b>Form</b>	Lyophilized from 0.22µm filtered solution in PBS (pH 7.4). Normally 8% trehalose is added as protectant before lyophilization.
<b>Molecular Mass</b>	The protein has a predicted MW of 50.6 kDa. Due to glycosylation, the protein migrates to 55-65 kDa based on Tris-Bis PAGE result.
<b>Endotoxin</b>	Less than 1EU per µg by the LAL method.
<b>Purity</b>	> 95% as determined by Tris-Bis PAGE > 95% as determined by HPLC
<b>Storage</b>	-20 to -80°C for 12 months as supplied from date of receipt. -20 to -80°C for 3-6 months in unopened state after reconstitution. 2-8°C for 2-7 days after reconstitution.

 Tel: 1-631-559-9269 1-516-512-3133

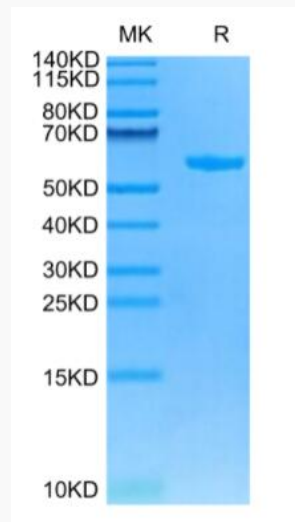
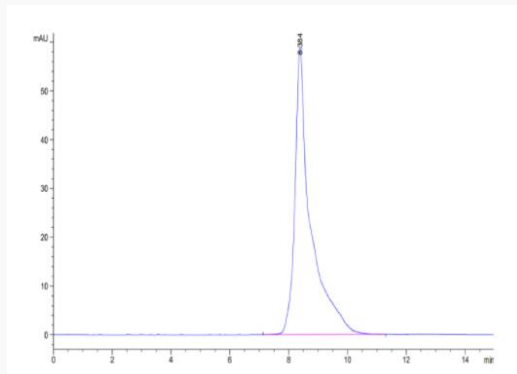
 Email: [info@creative-biomart.com](mailto:info@creative-biomart.com)  Fax: 1-631-938-8127

 45-1 Ramsey Road, Shirley, NY 11967, USA

Recommend to aliquot the protein into smaller quantities for optimal storage. Please avoid freeze-thaw cycles.

**Reconstitution**

Centrifuge tubes before opening. Reconstituting to a concentration more than 100 µg/ml is recommended (usually we use 1mg/ml solution for lyophilization). Dissolve the lyophilized protein in distilled water.

**Tris-Bis PAGE****SEC-HPLC**

Tel: 1-631-559-9269 1-516-512-3133

Email: [info@creative-biomart.com](mailto:info@creative-biomart.com) Fax: 1-631-938-8127

45-1 Ramsey Road, Shirley, NY 11967, USA