

# Recombinant Human HLA-G protein, His-Avi-tagged, Biotinylated

**Cat. No.** HLA-G-504H    **Lot. No.** (See product label)

## SPECIFICATION

<b>Product Overview</b>	Biotinylated Recombinant Human HLA-G protein(P17693-1(HLA-G)&P61769(B2M)&RIIPRHLQL), fused with His tag and Avi tag at the C-terminal, was expressed in HEK293.
<b>Species</b>	Human
<b>Source</b>	HEK293
<b>ProteinLength</b>	It contains Gly25-Thr305(HLA-G),Ile21-Met119(B2M) and RIIPRHLQL peptide.
<b>Form</b>	Lyophilized from 0.22µm filtered solution in PBS (pH 7.4). Normally 5% trehalose is added as protectant before lyophilization.
<b>Molecular Mass</b>	The protein has a predicted MW of 258 kDa. Due to glycosylation, the protein migrates to 260-265 kDa under Non reducing (N) condition based on Tris-Bis PAGE result.
<b>Endotoxin</b>	Less than 1EU per µg by the LAL method.
<b>Purity</b>	> 95% as determined by Tris-Bis PAGE > 95% as determined by HPLC
<b>Storage</b>	The product should be stored at -70°C or -20°C.

 Tel: 1-631-559-9269    1-516-512-3133

 Email: [info@creative-biomart.com](mailto:info@creative-biomart.com)     Fax: 1-631-938-8127

 45-1 Ramsey Road, Shirley, NY 11967, USA

**Reconstitution** Centrifuge tubes before opening. Reconstituting to a concentration more than 100 µg/ml is recommended. Dissolve the lyophilized protein in distilled water.

**Conjugation** Biotin

## GENE INFORMATION

**Gene Name** [HLA-G major histocompatibility complex, class I, G \[ Homo sapiens \]](#)

**Official Symbol** [HLA-G](#)

**Synonyms** HLA-G; major histocompatibility complex, class I, G; HLA G histocompatibility antigen, class I, G; HLA class I histocompatibility antigen, alpha chain G; b2 microglobulin; HLA G antigen; HLA class I molecule; MHC class I antigen G; HLA-G histocompatibility antigen, class I, G; MHC-G

**Gene ID** [3135](#)

**mRNA Refseq** [NM\\_002127](#)

**Protein Refseq** [NP\\_002118](#)

**MIM** [142871](#)

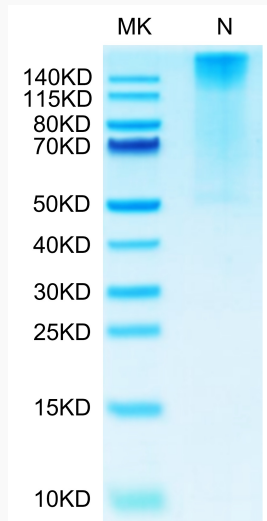
**UniProt ID** [P17693](#)

 Tel: 1-631-559-9269 1-516-512-3133

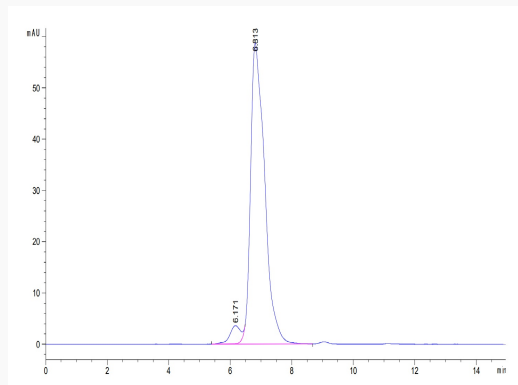
 Email: [info@creative-biomart.com](mailto:info@creative-biomart.com)  Fax: 1-631-938-8127

 45-1 Ramsey Road, Shirley, NY 11967, USA

**Tris-Bis PAGE**



**SEC-MALS**

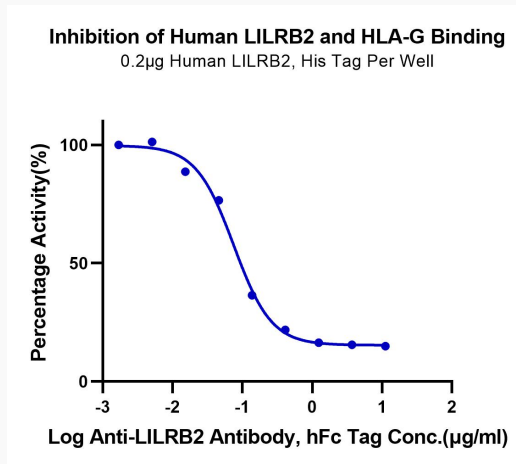


 Tel: 1-631-559-9269 1-516-512-3133

 Email: [info@creative-biomart.com](mailto:info@creative-biomart.com)  Fax: 1-631-938-8127

 45-1 Ramsey Road, Shirley, NY 11967, USA

**Blocking Data**



Serial dilutions of Anti-LILRB2 Antibody were added into Human LILRB2, His Tag : Biotinylated HLA-G Complex Tetramer, His Tag binding reactions. The half maximal inhibitory concentration (IC50) is 75.3ng/ml.

Tel: 1-631-559-9269 1-516-512-3133

Email: [info@creative-biomart.com](mailto:info@creative-biomart.com) Fax: 1-631-938-8127

45-1 Ramsey Road, Shirley, NY 11967, USA