

# Recombinant Cynomolgus HLA-G Tetramer protein, His-Avi-tagged

**Cat. No.** HLA-G-505C    **Lot. No.** (See product label)

## SPECIFICATION

<b>Product Overview</b>	Recombinant Cynomolgus HLA-G Tetramer protein(E0WKX9(HLA-G)&Q8SPW0(B2M)&RIIPRHLQL) is expressed from HEK293 with His tag and Avi tag at the C-Terminus,tetramer is assembled by biotinylated monomer and streptavidin. It contains Gly25-Thr305(HLA-G),Ile21-Met119(B2M) and RIIPRHLQL peptide.
<b>Species</b>	Cynomolgus
<b>Source</b>	HEK293
<b>ProteinLength</b>	Gly25-Thr305(HLA-G)&Ile21-Met119(B2M)
<b>Form</b>	Lyophilized from 0.22µm filtered solution in PBS (pH 7.4). Normally 8% trehalose is added as protectant before lyophilization.
<b>Bio-activity</b>	Cynomolgus LILRB2, hFc Tag captured on CM5 Chip via Protein A can bind Cynomolgus HLA-G Complex Tetramer, His Tag with an affinity constant of 42.50 nM as determined in SPR assay (Biacore T200).
<b>Molecular Mass</b>	The protein has a predicted MW of 258 kDa. Due to glycosylation, the protein migrates to 260-265 kDa under Non reducing (N) condition based on Tris-Bis PAGE result.
<b>Endotoxin</b>	Less than 1EU per µg by the LAL method.

 Tel: 1-631-559-9269    1-516-512-3133

 Email: [info@creative-biomart.com](mailto:info@creative-biomart.com)     Fax: 1-631-938-8127

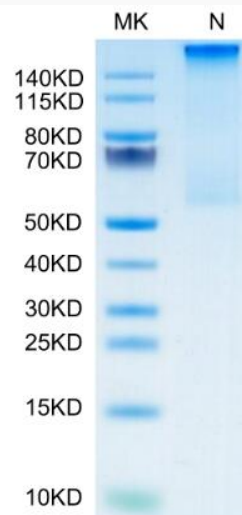
 45-1 Ramsey Road, Shirley, NY 11967, USA

**Purity** > 95% as determined by Tris-Bis PAGE  
> 95% as determined by HPLC

**Storage** -20 to -80°C for 12 months as supplied from date of receipt.  
-80°C for 3-6 months after reconstitution.  
2-8°C for 2-7 days after reconstitution.  
Recommend to aliquot the protein into smaller quantities for optimal storage. Please minimize freeze-thaw cycles.

**Reconstitution** Centrifuge the tube before opening. Reconstituting to a concentration more than 100 µg/ml is recommended. Dissolve the lyophilized protein in distilled water.

**Tris-Bis PAGE**



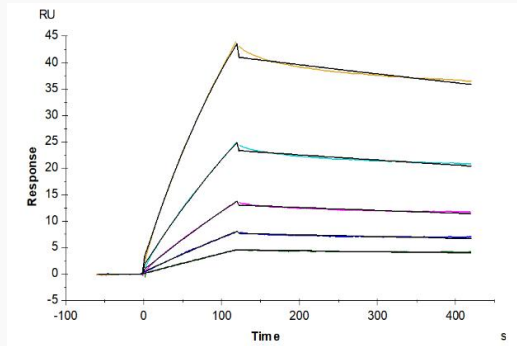
Tel: 1-631-559-9269 1-516-512-3133

Email: [info@creative-biomart.com](mailto:info@creative-biomart.com) Fax: 1-631-938-8127

45-1 Ramsey Road, Shirley, NY 11967, USA



SPR Data



Tel: 1-631-559-9269 1-516-512-3133

Email: [info@creative-biomart.com](mailto:info@creative-biomart.com) Fax: 1-631-938-8127

45-1 Ramsey Road, Shirley, NY 11967, USA