

## Active Recombinant Human HLA-G complex Protein (tetramer), His-Avi-tagged, PE-Labeled

Cat. No. HLA-G-505HP Lot. No. (See product label)

### SPECIFICATION

<b>Product Overview</b>	Recombinant PE-Labeled Human HLA-G Tetramer Protein(P17693-1(HLA-G)&P61769(B2M)&RIIPRHLQL)(Gly25-Thr305(HLA-G),Ile21-Met119(B2M) and RIIPRHLQL peptide) is expressed from Expi293 with His tag and Avi tag at the C-terminal,tetramer is assembled by biotinylated monomer and streptavidin.
<b>Species</b>	Human
<b>Source</b>	HEK293
<b>ProteinLength</b>	Gly25-Thr305(HLA-G),Ile21-Met119(B2M) and RIIPRHLQL peptide
<b>Form</b>	Supplied as 0.22µm filtered solution in PBS (pH 7.4). Please dilute to the desired concentration according to the concentration of the solution shown on the product label.
<b>Bio-activity</b>	Serial dilutions of Anti-LILRB2 Antibody were added into PE-Labeled Human HLA-G Tetramer, His Tag : Human LILRB2, mFc Tag binding reactions. The half maximal inhibitory concentration (IC50) is 0.45µg/ml.
<b>Molecular Mass</b>	The protein has a predicted MW of 258 kDa. Due to glycosylation, the protein migrates to 260-265 kDa under Non reducing (N) condition based on Tris-Bis PAGE result.
<b>Endotoxin</b>	Less than 1EU per

 Tel: 1-631-559-9269 1-516-512-3133

 Email: [info@creative-biomart.com](mailto:info@creative-biomart.com)  Fax: 1-631-938-8127

 45-1 Ramsey Road, Shirley, NY 11967, USA

	µg by the LAL method.
<b>Purity</b>	> 95% as determined by Tris-Bis PAGE
<b>Storage</b>	Valid for 12 months from date of receipt when stored at -80°C. Recommend to aliquot the protein into smaller quantities for optimal storage. Please do not repeated freeze-thaw cycles.
<b>Reconstitution</b>	It is recommended to reconstitute the lyophilized powder in sterile water to 100-200 ug/ml, and further dilute with other solvents. The dissolved protein can be stored at 4°C for 2-7 days and should be used up as soon as possible. If not in use for a short time, please store at -20°C.
<b>GENE INFORMATION</b>	
<b>Gene Name</b>	HLA-G major histocompatibility complex, class I, G [ Homo sapiens ]
<b>Official Symbol</b>	HLA-G
<b>Synonyms</b>	HLA-G; major histocompatibility complex, class I, G; HLA G histocompatibility antigen, class I, G; HLA class I histocompatibility antigen, alpha chain G; b2 microglobulin; HLA G antigen; HLA class I molecule; MHC class I antigen G; HLA-G histocompatibility antigen, class I, G; MHC-G;
<b>Gene ID</b>	3135
<b>mRNA Refseq</b>	NM_002127
<b>Protein Refseq</b>	NP_002118
<b>MIM</b>	142871

 Tel: 1-631-559-9269 1-516-512-3133

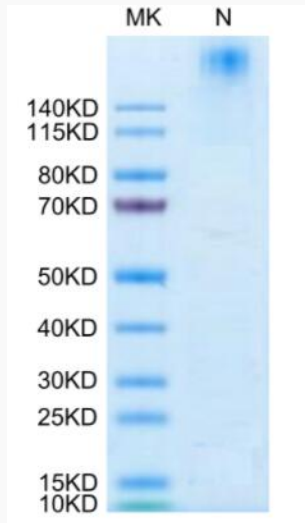
 Email: [info@creative-biomart.com](mailto:info@creative-biomart.com)  Fax: 1-631-938-8127

 45-1 Ramsey Road, Shirley, NY 11967, USA

UniProt ID

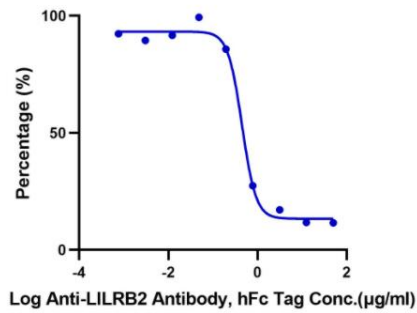
P17693

Tris-Bis PAGE




Blocking Data

Inhibition of Human LILRB2 and PE-Labeled HLA-G Binding  
0.2µg Human LILRB2, mFc Tag Per Well



 Tel: 1-631-559-9269 1-516-512-3133

 Email: [info@creative-biomart.com](mailto:info@creative-biomart.com)  Fax: 1-631-938-8127

 45-1 Ramsey Road, Shirley, NY 11967, USA