

Recombinant Rhesus macaque HLA-G protein, His-Avi-tagged

Cat. No. HLA-G-506R Lot. No. (See product label)

SPECIFICATION

Product Overview	Recombinant Rhesus macaque HLA-G protein(O02948(HLA-G)&Q6V7J5(B2M)&RIIPRHLQL), fused with His tag and Avi tag at the C-terminal, was expressed in HEK293.
Species	Rhesus macaque
Source	HEK293
ProteinLength	It contains Gly25-Thr305(HLA-G),Ile21-Met119(B2M) and RIIPRHLQL peptide.
Form	Supplied as 0.22µm filtered solution in PBS (pH7.4.)
Molecular Mass	The protein has a predicted MW of 258 kDa. Due to glycosylation, the protein migrates to 260-265 kDa under Non reducing (N) condition based on Tris-Bis PAGE result.
Endotoxin	Less than 1EU per µg by the LAL method.
Purity	> 95% as determined by Tris-Bis PAGE > 95% as determined by HPLC
Storage	The product should be stored at -70°C or -20°C.
Reconstitution	Centrifuge tubes before opening. Reconstituting to a concentration more than 100 µg/ml is recommended. Dissolve the lyophilized protein in distilled water.

 Tel: 1-631-559-9269 1-516-512-3133

 Email: info@creative-biomart.com  Fax: 1-631-938-8127

 45-1 Ramsey Road, Shirley, NY 11967, USA

GENE INFORMATION

Gene Name HLA-G major histocompatibility complex, class I, G [Homo sapiens]

Official Symbol HLA-G

Synonyms HLA-G; major histocompatibility complex, class I, G; HLA G histocompatibility antigen, class I, G; HLA class I histocompatibility antigen, alpha chain G; b2 microglobulin; HLA G antigen; HLA class I molecule; MHC class I antigen G; HLA-G histocompatibility antigen, class I, G; MHC-G

Gene ID 3135

mRNA Refseq NM_002127

Protein Refseq NP_002118

MIM 142871

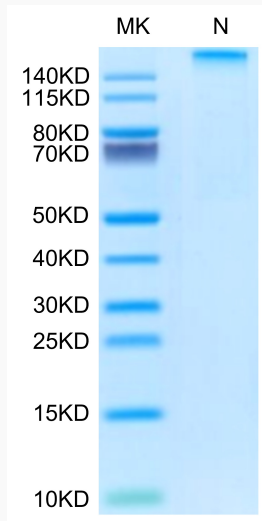
UniProt ID P17693

 Tel: 1-631-559-9269 1-516-512-3133

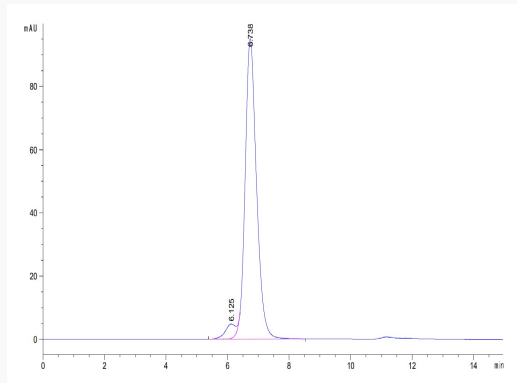
 Email: info@creative-biomart.com  Fax: 1-631-938-8127

 45-1 Ramsey Road, Shirley, NY 11967, USA

Tris-Bis PAGE



SEC-MALS

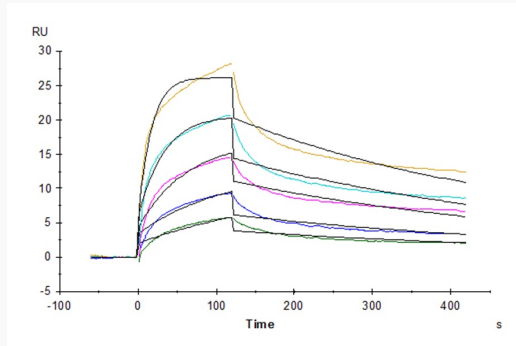


 Tel: 1-631-559-9269 1-516-512-3133

 Email: info@creative-biomart.com  Fax: 1-631-938-8127

 45-1 Ramsey Road, Shirley, NY 11967, USA

SPR Data



Rhesus macaque LILRB1, hFc Tag captured on CM5 Chip via Protein A can bind Rhesus macaque HLA-G Complex Tetramer, His Tag with an affinity constant of 1.74 nM as determined in SPR assay (Biacore T200).

 Tel: 1-631-559-9269 1-516-512-3133

 Email: info@creative-biomart.com  Fax: 1-631-938-8127

 45-1 Ramsey Road, Shirley, NY 11967, USA