

## Recombinant Human HLF Protein, GST-tagged

**Cat. No.** HLF-4852H    **Lot. No.** (See product label)

### SPECIFICATION

<b>Product Overview</b>	Human HLF full-length ORF ( AAH36093, 1 a.a. - 295 a.a.) recombinant protein with GST-tag at N-terminal.
<b>Species</b>	Human
<b>Source</b>	Wheat Germ
<b>Description</b>	This gene encodes a member of the proline and acidic-rich (PAR) protein family, a subset of the bZIP transcription factors. The encoded protein forms homodimers or heterodimers with other PAR family members and binds sequence-specific promoter elements to activate transcription. Chromosomal translocations fusing portions of this gene with the E2A gene cause a subset of childhood B-lineage acute lymphoid leukemias. Alternatively spliced transcript variants have been described, but their biological validity has not been determined. [provided by RefSeq]
<b>Molecular Mass</b>	58.19 kDa
<b>AA Sequence</b>	MEKMSRPLPLNPTFIPPPYGVLRSLLLENPLKLPLHHEDAFSKDKDKEKKLDDESNSP TVPQSAFLGPTLWDKTLPYDGDTFQLEYMDLEEFLESENGIPSPSQHDHSPHPPGL QPASSAAPSVM DLSSRASAPLHPGIPSPNCMQSPIRPGQLLPANRNTPSPIDPDTIQ VPVGYEPDPADLALSSIPGQEMFDPRKRKFSEEEELKPQPMIKKARKVFI PDDLKDDK YWARRRKNNMAAKRSRDARRLKENQIAIRASFLEKENSALRQEVADLRKELGKCKNI LAKYEARHGPL
<b>Applications</b>	Enzyme-linked Immunoabsorbent Assay

 Tel: 1-631-559-9269    1-516-512-3133

 Email: [info@creative-biomart.com](mailto:info@creative-biomart.com)     Fax: 1-631-938-8127

 45-1 Ramsey Road, Shirley, NY 11967, USA

Western Blot (Recombinant protein)  
Antibody Production  
Protein Array

<b>Notes</b>	Best use within three months from the date of receipt of this protein.
<b>Storage</b>	Store at -8 centigrade. Aliquot to avoid repeated freezing and thawing.
<b>Storage Buffer</b>	50 mM Tris-HCl, 10 mM reduced Glutathione, pH=8.0 in the elution buffer.

## GENE INFORMATION

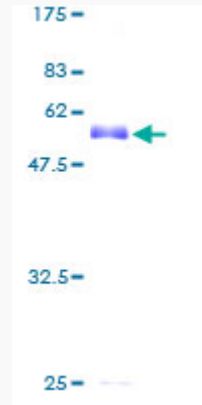
<b>Gene Name</b>	HLF hepatic leukemia factor [ Homo sapiens ]
<b>Official Symbol</b>	HLF
<b>Synonyms</b>	HLF; hepatic leukemia factor; MGC33822;
<b>Gene ID</b>	3131
<b>mRNA Refseq</b>	NM_002126
<b>Protein Refseq</b>	NP_002117
<b>MIM</b>	142385
<b>UniProt ID</b>	Q16534

 Tel: 1-631-559-9269 1-516-512-3133

 Email: [info@creative-biomart.com](mailto:info@creative-biomart.com)  Fax: 1-631-938-8127

 45-1 Ramsey Road, Shirley, NY 11967, USA

**Quality Control  
Testing**



12.5% SDS-PAGE Stained with Coomassie Blue.

 Tel: 1-631-559-9269 1-516-512-3133

 Email: [info@creative-biomart.com](mailto:info@creative-biomart.com)  Fax: 1-631-938-8127

 45-1 Ramsey Road, Shirley, NY 11967, USA