

Recombinant Staphylococcus Aureus HLY Protein (27-319 aa), His-SUMO-tagged

Cat. No. HLY-1020S **Lot. No.** (See product label)

SPECIFICATION

Product Overview	Recombinant Staphylococcus Aureus (strain NCTC 8325) HLY Protein (27-319 aa) is produced by E. coli expression system. This protein is fused with a 6xHis-SUMO tag at the N-terminal. Protein Description: Full Length of Mature Protein.
Species	Staphylococcus Aureus
Source	E.coli
ProteinLength	27-319 aa
Description	Alpha-toxin binds to the mbrane of eukaryotic cells resulting in the release of low-molecular weight molecules and leading to an eventual osmotic lysis. Heptamer oligomerization and pore formation is required for lytic activity.
Form	Tris-based buffer, 50% glycerol
Molecular Mass	49.3 kDa
AA Sequence	ADSDINIKTGTDDIGSNNTTVKTGDLVTYDKENGMHKKVFYSFIDDKNHNKLLVIRTK GTIAGQYRVYSEEGANKSGLAWPSAFKVQLQLPDNEVAQISDYPRNSIDTKEYMS TLTYGFNGNVTGDDTGKIGGLIGANVSIGHTLKYVQPDKTILESPTDKKVGWVKVIFN NMVNQNWGPYDRDSWNPVYGNQLFMKTRNGSMKAADNFLDPNKASSLLSSGFSP DFATVITMDRKASKQQTNIDVIYERVRDDYQLHWTSTNWKGTNTKDKWIDRSSERY KIDWEKEEMTN

 Tel: 1-631-559-9269 1-516-512-3133

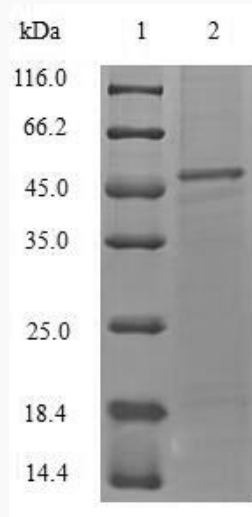
 Email: info@creative-biomart.com  Fax: 1-631-938-8127

 45-1 Ramsey Road, Shirley, NY 11967, USA

Purity	> 90% as determined by SDS-PAGE.
Notes	Repeated freezing and thawing is not recommended. Store working aliquots at 4 centigrade for up to one week.
Storage	The shelf life is related to many factors, storage state, buffer ingredients, storage temperature and the stability of the protein itself. Generally, the shelf life of liquid form is 6 months at -20 centigrade/-80 centigrade. The shelf life of lyophilized form is 12 months at -20 centigrade/-80 centigrade.
Concentration	A hardcopy of COA with concentration instruction is sent along with the products.

GENE INFORMATION

UniProt ID [Q2G1X0](#)



(Tris-Glycine gel) Discontinuous SDS-PAGE (reduced) with 5% enrichment gel and 15% separation gel.

 Tel: 1-631-559-9269 1-516-512-3133

 Email: info@creative-biomart.com  Fax: 1-631-938-8127

 45-1 Ramsey Road, Shirley, NY 11967, USA