

# Recombinant Human HMGB1 Protein, MYC/DDK-tagged, C13 and N15-labeled

Cat. No. HMGB1-017H Lot. No. (See product label)

## SPECIFICATION

<b>Product Overview</b>	HMGB1 MS Standard C13 and N15-labeled recombinant protein (NP_002119) with a C-terminal MYC/DDK tag, was expressed in HEK293 cells.
<b>Species</b>	Human
<b>Source</b>	HEK293
<b>Description</b>	This gene encodes a protein that belongs to the High Mobility Group-box superfamily. The encoded non-histone, nuclear DNA-binding protein regulates transcription, and is involved in organization of DNA. This protein plays a role in several cellular processes, including inflammation, cell differentiation and tumor cell migration. Multiple pseudogenes of this gene have been identified. Alternative splicing results in multiple transcript variants that encode the same protein.
<b>Molecular Mass</b>	24.9 kDa
<b>AA Sequence</b>	MGKGDPPKPRGKMSSYAFFVQTCREEHKKKHPDASVNFSEFSKKCSERWKTMSA KEKGFEDMAKADKARYEREMKTYIPPKGETKKKFKDPNAPKRPPSAFFLFCSEYR PKIKGEHPGLSIGDVAKKLGEMWNNTAADDKQPYEKKAACLKEKEYEKDIAAYRAK GK PDAAKKGVVKAESKSKKKEEEEEDEEDEDEEEEEDEEDEDEEDDDDETRTRPLE QKLISEEDLAANDILDYKDDDDKV
<b>Purity</b>	> 80% as determined by SDS-PAGE and Coomassie blue staining

 Tel: 1-631-559-9269 1-516-512-3133

 Email: [info@creative-biomart.com](mailto:info@creative-biomart.com)  Fax: 1-631-938-8127

 45-1 Ramsey Road, Shirley, NY 11967, USA

<b>Stability</b>	Stable for 3 months from receipt of products under proper storage and handling conditions.
<b>Storage</b>	Store at -80 centigrade. Avoid repeated freeze-thaw cycles.
<b>Concentration</b>	50 µg/mL as determined by BCA
<b>Storage Buffer</b>	100 mM glycine, 25 mM Tris-HCl, pH 7.3.

## GENE INFORMATION

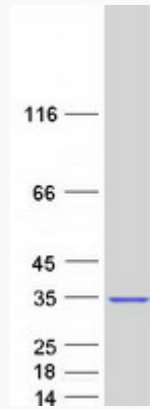
<b>Gene Name</b>	HMGB1 high mobility group box 1 [ Homo sapiens (human) ]
<b>Official Symbol</b>	HMGB1
<b>Synonyms</b>	HMGB1; high mobility group box 1; HMG-1; HMG1; HMG3; SBP-1; high mobility group protein B1; Amphoterin; Sulfoglucuronyl carbohydrate binding protein; high-mobility group (nonhistone chromosomal) protein 1
<b>Gene ID</b>	3146
<b>mRNA Refseq</b>	NM_002128
<b>Protein Refseq</b>	NP_002119
<b>MIM</b>	163905
<b>UniProt ID</b>	P09429

 Tel: 1-631-559-9269 1-516-512-3133

 Email: [info@creative-biomart.com](mailto:info@creative-biomart.com)  Fax: 1-631-938-8127

 45-1 Ramsey Road, Shirley, NY 11967, USA

SDS-PAGE



 Tel: 1-631-559-9269 1-516-512-3133

 Email: [info@creative-biomart.com](mailto:info@creative-biomart.com)  Fax: 1-631-938-8127

 45-1 Ramsey Road, Shirley, NY 11967, USA