

Active Recombinant Human HMGB1 Protein (Met1-Glu215), C-His tagged, Animal-free, Carrier-free

Cat. No. HMGB1-145H Lot. No. (See product label)

SPECIFICATION

Product Overview	Recombinant Human HMGB1 Protein (Met1-Glu215) with C-His tag was expressed in E. coli and Animal-free as well as Carrier-free.
Species	Human
Source	E.coli
ProteinLength	Met1-Glu215
Description	<p>High mobility group protein B1 protein (HMGB1) is the high mobility group box family of non-histone chromosomal proteins. Human HMGB1 is expressed as a 25 kDa single chain polypeptide containing three domains: two N-terminal HMG boxes A and B, and a negatively charged 30 aa C-terminal region that contains only Asp and Glu. Post-translational modification on HMGB1 have been reported, affect its localization, receptor interactions, and function. HMGB1, with a disulfide bond between C23 and C45, that cause cytokine production and the activation of NF-κB. Otherwise, the fully oxidized form has no immune function, losing its proinflammatory effect and the apoptotic cell death activation function.</p>
Form	Lyophilized
Bio-activity	Measure by its ability to induce TNF alpha in RAW264.7 cells. The ED50 for this effect is < 10 µg/mL.

 Tel: 1-631-559-9269 1-516-512-3133

 Email: info@creative-biomart.com  Fax: 1-631-938-8127

 45-1 Ramsey Road, Shirley, NY 11967, USA

Molecular Mass	The protein has a calculated MW of 25.70 kDa. The protein migrates as 25-35 kDa under reducing condition (SDS-PAGE analysis).
Endotoxin	< 0.1 EU/μg of the protein by the LAL method.
Purity	>98% as determined by SDS-PAGE analysis.
Storage	This product is stable after storage at: -20 centigrade for 12 months in lyophilized state from date of receipt. -20 or -80 centigrade for 1 month under sterile conditions after reconstitution. Avoid repeated freeze/thaw cycles.
Storage Buffer	Lyophilized from a 0.2 μm filtered solution of PBS, pH 8.0.
Reconstitution	It is recommended to reconstitute the lyophilized protein in sterile H ₂ O to a concentration not less than 200 μg/mL and incubate the stock solution for at least 20 min to ensure sufficient re-dissolved.
Shipping	The product is shipped with polar packs. Upon receipt, store it immediately at -20 centigrade or lower for long term storage.

GENE INFORMATION

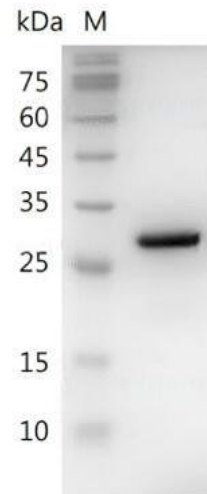
Gene Name	HMGB1 high mobility group box 1 [Homo sapiens (human)]
Official Symbol	HMGB1
Synonyms	HMGB1; high mobility group box 1; high mobility group (nonhistone chromosomal) protein 1 , high mobility group box 1 , HMG1; high mobility group protein B1; Amphoterin; DKFZp686A04236; high mobility group protein 1; HMG3; SBP 1; Sulfoglucuronyl carbohydrate binding protein; HMG-1; high-mobility group box 1;

 Tel: 1-631-559-9269 1-516-512-3133

 Email: info@creative-biomart.com  Fax: 1-631-938-8127

 45-1 Ramsey Road, Shirley, NY 11967, USA

high-mobility group (nonhistone chromosomal) protein 1; HMG1; SBP-1;

Gene ID 3146**mRNA Refseq** NM_002128**Protein Refseq** NP_002119**MIM** 163905**UniProt ID** P09429**SDS-PAGE analysis
of recombinant
human HMGB1.** Tel: 1-631-559-9269 1-516-512-3133 Email: info@creative-biomart.com  Fax: 1-631-938-8127 45-1 Ramsey Road, Shirley, NY 11967, USA