

Recombinant Human HMGB1 Protein (Met1-Glu215), N-His tagged

Cat. No. HMGB1-3077H Lot. No. (See product label)

SPECIFICATION

Product Overview	Recombinant human HMGB1 (Met1~Glu215) protein fused with the N-terminal His tag was expressed in Mammalian cells.
Species	Human
Source	Mammalian Cells
ProteinLength	Met1-Glu215
Molecular Mass	26.97 kDa
Purity	>90 % as determined by SDS-PAGE.
Notes	For research use only.
Storage	Use a manual defrost freezer and avoid repeated freeze thaw cycles. Store at 2 to 8 centigrade for one week. Store at -20 to -80 centigrade for twelve months from the date of receipt.
Storage Buffer	Supplied as solution form in 50 mM Tris-HCl pH 7, 150 mM NaCl, 1mM EDTA or lyophilized from 50 mM Tris-HCl pH 7, 150 mM NaCl, 1mM EDTA.
Reconstitution	Reconstitute in sterile water for a stock solution.

 Tel: 1-631-559-9269 1-516-512-3133

 Email: info@creative-biomart.com  Fax: 1-631-938-8127

 45-1 Ramsey Road, Shirley, NY 11967, USA

Shipping

In general, proteins are provided as lyophilized powder/frozen liquid. They are shipped out with dry ice/blue ice unless customers require otherwise.

GENE INFORMATION
Gene Name

HMGB1 high mobility group box 1 [Homo sapiens (human)]

Official Symbol

HMGB1

Synonyms

HMGB1; high mobility group box 1; high mobility group (nonhistone chromosomal) protein 1, high mobility group box 1, HMG1; high mobility group protein B1; Amphoterin; DKFZp686A04236; high mobility group protein 1; HMG3; SBP 1; Sulfoglucuronyl carbohydrate binding protein; HMG-1; high-mobility group box 1; high-mobility group (nonhistone chromosomal) protein 1; HMG1; SBP-1;

Gene ID

3146

mRNA Refseq

NM_002128

Protein Refseq

NP_002119

MIM

163905

UniProt ID

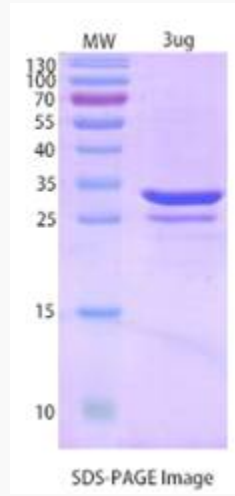
P09429

 Tel: 1-631-559-9269 1-516-512-3133

 Email: info@creative-biomart.com  Fax: 1-631-938-8127

 45-1 Ramsey Road, Shirley, NY 11967, USA

SDS-PAGE



 Tel: 1-631-559-9269 1-516-512-3133

 Email: info@creative-biomart.com  Fax: 1-631-938-8127

 45-1 Ramsey Road, Shirley, NY 11967, USA