

## Recombinant Human HMGB1 Protein (Gly2-Phe89)

Cat. No. HMGB1-3079H Lot. No. (See product label)

### SPECIFICATION

<b>Product Overview</b>	Recombinant human HMGB1 (Gly2-Phe89) protein fused with out tag was expressed in E. coli.
<b>Species</b>	Human
<b>Source</b>	E.coli
<b>ProteinLength</b>	Gly2-Phe89
<b>Molecular Mass</b>	9.68 kDa
<b>Purity</b>	>90 % as determined by SDS-PAGE.
<b>Notes</b>	For research use only.
<b>Storage</b>	Use a manual defrost freezer and avoid repeated freeze thaw cycles. Store at 2 to 8 centigrade for one week. Store at -20 to -80 centigrade for twelve months from the date of receipt.
<b>Storage Buffer</b>	Supplied as solution form in PBS or lyophilized from PBS.
<b>Reconstitution</b>	Reconstitute in sterile water for a stock solution.
<b>Shipping</b>	In general, proteins are provided as lyophilized powder/frozen liquid. They are shipped out with dry ice/blue ice unless customers require otherwise.

 Tel: 1-631-559-9269 1-516-512-3133

 Email: [info@creative-biomart.com](mailto:info@creative-biomart.com)  Fax: 1-631-938-8127

 45-1 Ramsey Road, Shirley, NY 11967, USA

## GENE INFORMATION

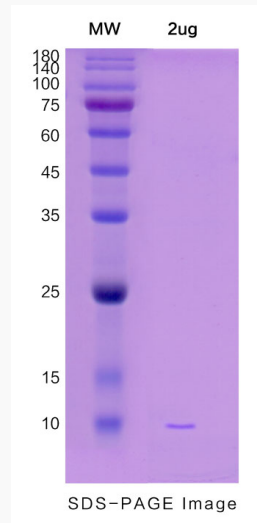
<b>Gene Name</b>	HMGB1 high mobility group box 1 [ Homo sapiens (human) ]
<b>Official Symbol</b>	HMGB1
<b>Synonyms</b>	HMGB1; high mobility group box 1; high mobility group (nonhistone chromosomal) protein 1, high mobility group box 1, HMG1; high mobility group protein B1; Amphoterin; DKFZp686A04236; high mobility group protein 1; HMG3; SBP 1; Sulfoglucuronyl carbohydrate binding protein; HMG-1; high-mobility group box 1; high-mobility group (nonhistone chromosomal) protein 1; HMG1; SBP-1;
<b>Gene ID</b>	3146
<b>mRNA Refseq</b>	NM_002128
<b>Protein Refseq</b>	NP_002119
<b>MIM</b>	163905
<b>UniProt ID</b>	P09429

 Tel: 1-631-559-9269 1-516-512-3133

 Email: [info@creative-biomart.com](mailto:info@creative-biomart.com)  Fax: 1-631-938-8127

 45-1 Ramsey Road, Shirley, NY 11967, USA

**SDS-PAGE**



 Tel: 1-631-559-9269 1-516-512-3133

 Email: [info@creative-biomart.com](mailto:info@creative-biomart.com)  Fax: 1-631-938-8127

 45-1 Ramsey Road, Shirley, NY 11967, USA