

Recombinant Human HMGB1 Protein (Met1-Glu215), N-His tagged

Cat. No. HMGB1-3080H **Lot. No.** (See product label)

SPECIFICATION

Product Overview	Recombinant human HMGB1 (Met1-Glu215) protein fused with the N-His tag was expressed in E. coli.
Species	Human
Source	E.coli
ProteinLength	Met1-Glu215
Molecular Mass	27.20 kDa
Purity	>90 % as determined by SDS-PAGE.
Notes	For research use only.
Storage	Use a manual defrost freezer and avoid repeated freeze thaw cycles. Store at 2 to 8 centigrade for one week. Store at -20 to -80 centigrade for twelve months from the date of receipt.
Storage Buffer	0.01M PBS, pH 7.4, 0.02 % NLS
Reconstitution	Reconstitute in sterile water for a stock solution.
Shipping	In general, proteins are provided as lyophilized powder/frozen liquid. They are

 Tel: 1-631-559-9269 1-516-512-3133

 Email: info@creative-biomart.com  Fax: 1-631-938-8127

 45-1 Ramsey Road, Shirley, NY 11967, USA

shipped out with dry ice/blue ice unless customers require otherwise.

GENE INFORMATION

Gene Name HMGB1 high mobility group box 1 [Homo sapiens (human)]

Official Symbol HMGB1

Synonyms HMGB1; high mobility group box 1; high mobility group (nonhistone chromosomal) protein 1, high mobility group box 1, HMG1; high mobility group protein B1; Amphoterin; DKFZp686A04236; high mobility group protein 1; HMG3; SBP 1; Sulfoglucuronyl carbohydrate binding protein; HMG-1; high-mobility group box 1; high-mobility group (nonhistone chromosomal) protein 1; HMG1; SBP-1;

Gene ID 3146

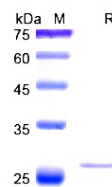
mRNA Refseq NM_002128

Protein Refseq NP_002119

MIM 163905

UniProt ID P09429

SDS-PAGE



Tel: 1-631-559-9269 1-516-512-3133

Email: info@creative-biomart.com Fax: 1-631-938-8127

45-1 Ramsey Road, Shirley, NY 11967, USA