

## Recombinant Human HMGB1 Protein, GST-tagged

**Cat. No.** HMGB1-4866H    **Lot. No.** (See product label)

### SPECIFICATION

<b>Product Overview</b>	Human HMGB1 full-length ORF ( AAH03378.1, 1 a.a. - 215 a.a.) recombinant protein with GST-tag at N-terminal.
<b>Species</b>	Human
<b>Source</b>	Wheat Germ
<b>Description</b>	<p>This gene encodes a protein that belongs to the High Mobility Group-box superfamily. The encoded non-histone, nuclear DNA-binding protein regulates transcription, and is involved in organization of DNA. This protein plays a role in several cellular processes, including inflammation, cell differentiation and tumor cell migration. Multiple pseudogenes of this gene have been identified. Alternative splicing results in multiple transcript variants that encode the same protein. [provided by RefSeq, Sep 2015]</p>
<b>Molecular Mass</b>	49.39 kDa
<b>AA Sequence</b>	<p>MGKGDPPKPRGKMSSYAFFVQTCREEHKKKHPDASVNFSEFSKKCSERWKTMSA            KEKGFEDMAKADKARYEREMKTYIPPKGETKKKFKDPNAPKRPPSAFFLFCSEYR            PKIKGEHPGLSIGDVAKKLGEMWNNTAADDKQPYEKKAACLKEKEYEKDIAAYRAK GK            PDAAKKGVVKAESKSKKKKEEEDEEEDDEEEDEEEDEEEDDEEEDDDDE</p>
<b>Applications</b>	<p>Enzyme-linked Immunoabsorbent Assay            Western Blot (Recombinant protein)            Antibody Production</p>

 Tel: 1-631-559-9269    1-516-512-3133

 Email: [info@creative-biomart.com](mailto:info@creative-biomart.com)     Fax: 1-631-938-8127

 45-1 Ramsey Road, Shirley, NY 11967, USA

**Protein Array**

<b>Notes</b>	Best use within three months from the date of receipt of this protein.
<b>Storage</b>	Store at -8 centigrade. Aliquot to avoid repeated freezing and thawing.
<b>Storage Buffer</b>	50 mM Tris-HCl, 10 mM reduced Glutathione, pH=8.0 in the elution buffer.

**GENE INFORMATION**

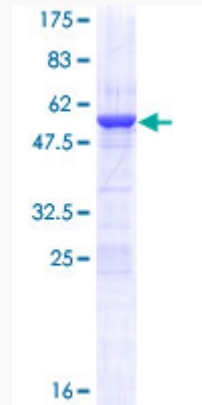
<b>Gene Name</b>	HMGB1 high mobility group box 1 [ Homo sapiens ]
<b>Official Symbol</b>	HMGB1
<b>Synonyms</b>	HMGB1; high mobility group box 1; high mobility group (nonhistone chromosomal) protein 1 , high mobility group box 1 , HMG1; high mobility group protein B1; Amphoterin; DKFZp686A04236; high mobility group protein 1; HMG3; SBP 1; Sulfoglucuronyl carbohydrate binding protein; HMG-1; high-mobility group box 1; high-mobility group (nonhistone chromosomal) protein 1; HMG1; SBP-1;
<b>Gene ID</b>	3146
<b>mRNA Refseq</b>	NM_002128
<b>Protein Refseq</b>	NP_002119
<b>MIM</b>	163905
<b>UniProt ID</b>	P09429

 Tel: 1-631-559-9269 1-516-512-3133

 Email: [info@creative-biomart.com](mailto:info@creative-biomart.com)  Fax: 1-631-938-8127

 45-1 Ramsey Road, Shirley, NY 11967, USA

**Quality Control  
Testing**



12.5% SDS-PAGE Stained with Coomassie Blue.

 Tel: 1-631-559-9269 1-516-512-3133

 Email: [info@creative-biomart.com](mailto:info@creative-biomart.com)  Fax: 1-631-938-8127

 45-1 Ramsey Road, Shirley, NY 11967, USA