

Recombinant Human HMGB1 protein, GST-tagged

Cat. No. HMGB1-5643H Lot. No. (See product label)

SPECIFICATION

Product Overview	Recombinant Human HMGB1 protein(P09429)(8-179aa), fused with N-terminal GST tag, was expressed in E.coli.
Species	Human
Source	E.coli
ProteinLength	8-179aa
Form	If the delivery form is liquid, the default storage buffer is Tris/PBS-based buffer, 5%-50% glycerol. If the delivery form is lyophilized powder, the buffer before lyophilization is Tris/PBS-based buffer, 6% Trehalose, pH 8.0.
Molecular Mass	47.2 kDa
Purity	Greater than 90% as determined by SDS-PAGE.
Storage	Store at -20°C/-80°C upon receipt, aliquoting is necessary for mutiple use. Avoid repeated freeze-thaw cycles.
Reconstitution	We recommend that this vial be briefly centrifuged prior to opening to bring the contents to the bottom. Please reconstitute protein in deionized sterile water to a concentration of 0.1-1.0 mg/mL. We recommend to add 5-50% of glycerol (final concentration) and aliquot for long-term storage at -20°C/-80°C.

 Tel: 1-631-559-9269 1-516-512-3133

 Email: info@creative-biomart.com  Fax: 1-631-938-8127

 45-1 Ramsey Road, Shirley, NY 11967, USA

AA Sequence

KPRGKMSSYAFFVQTCREEHKKKHPDASVNFSEFSKKCSERWKTMSAKEKGFED
 MAKADKARYEREMKTYIPPKGETKKKFKDPNAPKRPPSAFFLFCSEYRPKIKGEHPG
 LSIGDVAKKLGEMWNNTAADDKQPYEKKAACLKEKEYEKDIAAYRAKGGKPDAAKKGV
 VKAE

GENE INFORMATION

Gene Name [HMGB1 high mobility group box 1 \[Homo sapiens \]](#)

Official Symbol [HMGB1](#)

Synonyms HMGB1; high mobility group box 1; high mobility group (nonhistone chromosomal) protein 1 , high mobility group box 1 , HMG1; high mobility group protein B1; Amphoterin; DKFZp686A04236; high mobility group protein 1; HMG3; SBP 1; Sulfoglucuronyl carbohydrate binding protein; HMG-1; high-mobility group box 1; high-mobility group (nonhistone chromosomal) protein 1; HMG1; SBP-1;

Gene ID [3146](#)

mRNA Refseq [NM_002128](#)

Protein Refseq [NP_002119](#)

MIM [163905](#)

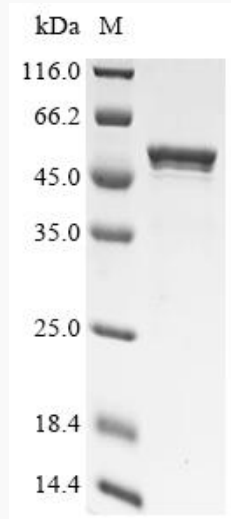
UniProt ID [P09429](#)

 Tel: 1-631-559-9269 1-516-512-3133

 Email: info@creative-biomart.com  Fax: 1-631-938-8127

 45-1 Ramsey Road, Shirley, NY 11967, USA

SDS-PAGE



 Tel: 1-631-559-9269 1-516-512-3133

 Email: info@creative-biomart.com  Fax: 1-631-938-8127

 45-1 Ramsey Road, Shirley, NY 11967, USA