

## Recombinant Human HMOX1 Protein, His-tagged

Cat. No. HMOX1-023H Lot. No. (See product label)

### SPECIFICATION

<b>Product Overview</b>	Recombinant full length human HMOX1 protein (1-265) with a C-terminal His tag was expressed in E. coli.
<b>Species</b>	Human
<b>Source</b>	E.coli
<b>ProteinLength</b>	1-265
<b>Description</b>	Heme oxygenase, an essential enzyme in heme catabolism, cleaves heme to form biliverdin, which is subsequently converted to bilirubin by biliverdin reductase, and carbon monoxide, a putative neurotransmitter. Heme oxygenase activity is induced by its substrate heme and by various nonheme substances. Heme oxygenase occurs as 2 isozymes, an inducible heme oxygenase-1 and a constitutive heme oxygenase-2. HMOX1 and HMOX2 belong to the heme oxygenase family.
<b>Form</b>	50 mM HEPES, pH 8.0, with 150 mM sodium chloride
<b>Molecular Mass</b>	31 kDa
<b>Purity</b>	≥90% estimated by SDS-PAGE
<b>Stability</b>	≥ 1 year
<b>Storage</b>	Store at -80 centigrade

 Tel: 1-631-559-9269 1-516-512-3133

 Email: [info@creative-biomart.com](mailto:info@creative-biomart.com)  Fax: 1-631-938-8127

 45-1 Ramsey Road, Shirley, NY 11967, USA

**Shipping** Dry ice in continental US; may vary elsewhere

## GENE INFORMATION

**Gene Name** HMOX1 heme oxygenase 1 [ Homo sapiens (human) ]

**Official Symbol** HMOX1

**Synonyms** HMOX1; heme oxygenase 1; HO-1; HSP32; HMOX1D; bK286B10; heme oxygenase 1; heat shock protein, 32-kD; heme oxygenase (decycling) 1; EC 1.14.14.18

**Gene ID** 3162

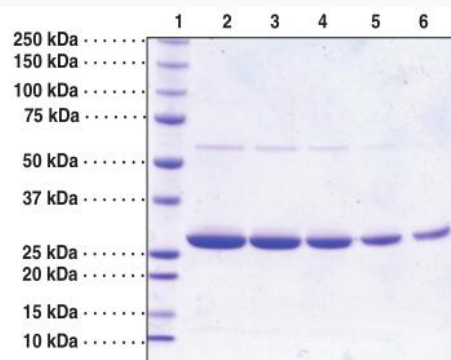
**mRNA Refseq** NM\_002133

**Protein Refseq** NP\_002124

**MIM** 141250

**UniProt ID** P09601

**SDS-PAGE analysis of HMOX1.**



Tel: 1-631-559-9269 1-516-512-3133

Email: [info@creative-biomart.com](mailto:info@creative-biomart.com) Fax: 1-631-938-8127

45-1 Ramsey Road, Shirley, NY 11967, USA



Lane 1: MW Markers

Lane 2: HMOX1 (8 g)

Lane 3: HMOX1 (6 g)

Lane 4: HMOX1 (4 g)

Lane 5: HMOX1 (2 g)

Lane 6: HMOX1 (1 g)

 Tel: 1-631-559-9269 1-516-512-3133

 Email: [info@creative-biomart.com](mailto:info@creative-biomart.com)  Fax: 1-631-938-8127

 45-1 Ramsey Road, Shirley, NY 11967, USA