

Recombinant Full Length Human HMOX1 Protein, C-Flag-tagged

Cat. No. HMOX1-1170HFL **Lot. No.** (See product label)

SPECIFICATION

Product Overview	Recombinant Full Length Human HMOX1 Protein, fused to Flag-tag at C-terminus, was expressed in Mammalian cells.
Species	Human
Source	Mammalian Cells
Description	Heme oxygenase, an essential enzyme in heme catabolism, cleaves heme to form biliverdin, which is subsequently converted to bilirubin by biliverdin reductase, and carbon monoxide, a putative neurotransmitter. Heme oxygenase activity is induced by its substrate heme and by various nonheme substances. Heme oxygenase occurs as 2 isozymes, an inducible heme oxygenase-1 and a constitutive heme oxygenase-2. HMOX1 and HMOX2 belong to the heme oxygenase family.
Form	25 mM Tris HCl, pH 7.3, 100 mM glycine, 10% glycerol.
Molecular Mass	32.6 kDa
AA Sequence	MERPQPDSMPQDLSEALKEATKEVHTQAENAEFMRNFQKGQVTRDGFKLVMASLY HIYVALEEEIERNKE SPVFAPVYFPEELHRKAALEQDLAFWYGPRWQEVIPYTPAMQ HYVKRLHEVGRTEPELLVAHAYTRYLGD LSGGQVLKkiaQKALDLPSSGEGLAFFTF PNIASATKFKQLYRSRMNSLEMPAVRQRVIEEAKTAFLLN IQLFEELQELLTHDTKD QSPSRAPGLRQRASNKVQDSAPVETPRGKPLNTRSQAPLLRWVLTLSFLVAT VAVGLYAMTRTRPLEQKLISEEDLAANDILDYKDDDDKV

 Tel: 1-631-559-9269 1-516-512-3133

 Email: info@creative-biomart.com  Fax: 1-631-938-8127

 45-1 Ramsey Road, Shirley, NY 11967, USA

Purity	> 80% as determined by SDS-PAGE and Coomassie blue staining.
Stability	Stable for 12 months from the date of receipt of the product under proper storage and handling conditions. Avoid repeated freeze-thaw cycles.
Storage	Store at -80 centigrade.
Concentration	>50 ug/mL as determined by microplate BCA method.
Preparation	Recombinant protein was captured through anti-DDK affinity column followed by conventional chromatography steps.
Protein Families	Druggable Genome, Transmembrane
Protein Pathways	Porphyrin and chlorophyll metabolism
Full Length	Full L.

GENE INFORMATION

Gene Name	HMOX1 heme oxygenase 1 [Homo sapiens (human)]
Official Symbol	HMOX1
Synonyms	HO-1; HSP32; HMOX1D; bK286B10
Gene ID	3162
mRNA Refseq	NM_002133.3
Protein Refseq	NP_002124.1

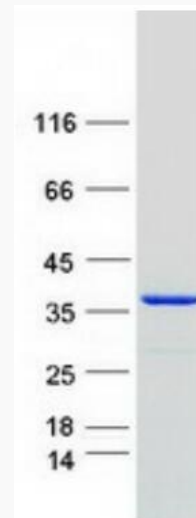
 Tel: 1-631-559-9269 1-516-512-3133

 Email: info@creative-biomart.com  Fax: 1-631-938-8127

 45-1 Ramsey Road, Shirley, NY 11967, USA

MIM 141250

UniProt ID P09601



Coomassie blue staining of purified HMOX1 protein.

 Tel: 1-631-559-9269 1-516-512-3133

 Email: info@creative-biomart.com  Fax: 1-631-938-8127

 45-1 Ramsey Road, Shirley, NY 11967, USA