

Recombinant Human HMOX1 protein, His & S-tagged

Cat. No. HMOX1-2604H Lot. No. (See product label)

SPECIFICATION

Product Overview	Recombinant Human HMOX1 aa. (Leu61~Ile172 (Accession # P09601)) fused with N-terminal His & S tag was produced in E. coli cells.
Species	Human
Source	E.coli
ProteinLength	Leu61~Ile172
Description	Heme oxygenase, an essential enzyme in heme catabolism, cleaves heme to form biliverdin, which is subsequently converted to bilirubin by biliverdin reductase, and carbon monoxide, a putative neurotransmitter. Heme oxygenase activity is induced by its substrate heme and by various nonheme substances. Heme oxygenase occurs as 2 isozymes, an inducible heme oxygenase-1 and a constitutive heme oxygenase-2. HMOX1 and HMOX2 belong to the heme oxygenase family.
Form	Freeze-dried powder
Molecular Mass	24kDa as determined by SDS-PAGE reducing conditions
Endotoxin	<1.0EU per 1g (determined by the LAL method)
Purity	>95%
Characteristic	The isoelectric point is 5.7.

 Tel: 1-631-559-9269 1-516-512-3133

 Email: info@creative-biomart.com  Fax: 1-631-938-8127

 45-1 Ramsey Road, Shirley, NY 11967, USA

Applications	SDS-PAGE; WB; ELISA; IP
Stability	The thermal stability is described by the loss rate. The loss rate was determined by accelerated thermal degradation test, that is, incubate the protein at 37°C for 48h, and no obvious degradation and precipitation were observed. The loss rate is less than 5% within the expiration date under appropriate storage condition.
Storage	Avoid repeated freeze/thaw cycles. Store at 2-8°C for one month. Aliquot and store at -80°C for 12 months.
Storage buffer	Supplied as lyophilized form in PBS, pH7.4, containing 5% trehalose, 0.01% sarcosyl.
Reconstitution	Reconstitute in sterile PBS, pH7.2-pH7.4

GENE INFORMATION

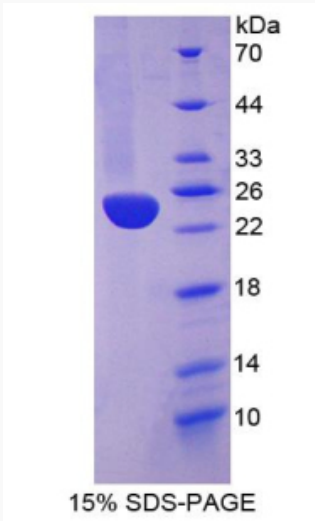
Gene Name	HMOX1 heme oxygenase 1 [Homo sapiens (human)]
Official Symbol	HMOX1
Synonyms	HMOX1; heme oxygenase 1; HO-1; HSP32; HMOX1D; bK286B10; heme oxygenase 1; heat shock protein, 32-kD; heme oxygenase (decycling) 1
Gene ID	3162
mRNA Refseq	NM_002133.2
Protein Refseq	NP_002124.1
UniProt ID	P09601

 Tel: 1-631-559-9269 1-516-512-3133

 Email: info@creative-biomart.com  Fax: 1-631-938-8127

 45-1 Ramsey Road, Shirley, NY 11967, USA

SDS-PAGE



 Tel: 1-631-559-9269 1-516-512-3133

 Email: info@creative-biomart.com  Fax: 1-631-938-8127

 45-1 Ramsey Road, Shirley, NY 11967, USA